

Polyamid gegossen

PA 6 G

ist ein im Monomergußverfahren hergestellter teilkristalliner Kunststoff. Gegenüber extrudiertem Polyamid zeichnet er sich durch höhere mechanische Festigkeit, bessere Maßhaltigkeit, höhere Verschleißfestigkeit und niedrigerer Feuchtigkeitsaufnahme aus.

Anwendungsgebiet:

Lager, Führungen, Kettäder, Zahnräder, Gleitschienen, Mitnehmer

PA 6 G +ÖL

mit Schmierstoff ÖL

PA 6 G +PE

mit Festschmierstoff Polyethylen

PA 6 G +HI

hitzestabilisiert

PA 6 G +MoS

mit Festschmierstoff Molybdändisulfid

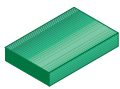
PA 6 G +GI

schlagzähmodifiziert



NYLATRON® GSM

enthält fein verteilte Molybdändisulfid-Partikel, die positiv auf das Reibungs- und Verschleißverhalten einwirken ohne dabei der für nicht-modifizierte Gusspolyamid 6 Typen inhärenten hohen Schlag- und Ermüdungsfestigkeit zu schaden. Nylatron GSM ist ein beliebter Werkstoff für Zahnräder, Gleitelemente, Kettäder und Seilrollen.

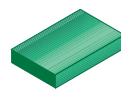


Platten

Farben

- dunkelgrau
- naturfarben
- schwarz
- blau
- gelb
- anthrazit
- hellgrün
- grün

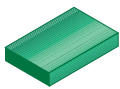
Stärke	Längen	Toleranzen Stärke mm		PA 6 G			
				Breite: 610 mm	Breite: 1.000 mm	Breite: 1.220 mm	Breite: 1.250 mm
				kg/m	kg/m	kg/m	kg/m
8	1.000 - 2.000	0,2	1,7		11,500 ○		
	2.500					13,330 ○	
10	1.220	2,5		8,240 ○ ●			
	1.000 - 2.000			14,500 ○ ●			
	2.500					16,340 ○	
	2.000 - 3.050				16,800 ○ ●		
11	2.000	0,5	1,7		14,080 ○		
	2.500					17,850 ○	
12	1.220	0,3	2,5	9,670 ○ ●			
	1.000 - 2.000				16,000 ○ ●		
	2.500						19,360 ○
	2.000 - 3.050					19,450 ○ ●	
15	1.000 - 2.000	0,5		20,000 ○ ●			
	2.500					23,880 ○	
	2.000 - 3.050				24,600 ○ ●		
16	1.220	0,3		12,580 ○ ●			
	1.000 - 2.000			21,500 ○ ●			
	2.500					25,380 ○	
	2.000 - 3.050				25,200 ○ ●		
18	1.000 - 2.000	0,5		24,500 ○			
	2.000				30,200 ●		
20	1.220	0,3	3	15,450 ○ ●			
	1.000 - 2.000				26,600 ○ ●		
	2.000				26,600 ●		
	2.500						31,410 ○
	2.000 - 3.050					31,800 ○ ●	
22	2.000	0,5	2,5		29,000 ●		
	1.000 - 2.000				29,000 ○		
25	1.220	0,3		19,020 ○ ●			
	1.000 - 2.000			32,000 ○ ●			
	2.000			32,000 ●			
	2.500					39,170 ○	
	2.000 - 3.050				39,000 ○ ●		
30	1.220	0,5	3,5	22,870 ○ ●			
	1.000 - 2.000				38,500 ○ ●		
	2.000				38,500 ●		
	2.500						47,000 ○
	2.000 - 3.050					48,000 ○ ●	
35	1.220			26,480 ○ ●			
	1.000 - 2.000			45,300 ○ ●			
	2.500					54,840 ○	
	2.000 - 3.050				55,800 ○ ●		
40	1.220			30,080 ○ ●			
	1.000 - 2.000			51,000 ○ ●			
	2.000			51,000 ●			
	2.500					62,670 ○	
	2.000 - 3.050				62,400 ○ ●		
45	1.220	5		33,650 ○ ●			
	1.000 - 2.000			57,000 ○ ●			
	2.500					70,500 ○	



Platten

- Farben**
- dunkelgrau
 - naturfarben
 - schwarz
 - blau
 - gelb
 - anthrazit
 - hellgrün
 - grün

Stärke	Längen	Toleranzen Stärke mm		PA 6 G			
				Breite: 610 mm	Breite: 1.000 mm	Breite: 1.220 mm	Breite: 1.250 mm
				kg/m	kg/m	kg/m	kg/m
mm	mm	min.	max.				
45	2.000 - 3.050	0,5	5			70,200 ○●	
50	1.220			37,250 ○●			
	1.000 - 2.000				63,500 ○●		
	2.000				63,500 ●		
	2.500						78,340 ○
	2.000 - 3.050					78,000 ○●	
55	1.220			41,270 ●			
	1.000 - 2.000				70,000 ○●		
	2.500						86,170 ○
	3.050					86,400 ○	
60	1.220			44,880 ○●			
	1.000 - 2.000				76,000 ○●		
	2.000				76,000 ●		
	2.500						94,010 ○
	2.000 - 3.050					93,000 ○●	
65	1.220			48,440 ○●			
	1.000 - 2.000				82,500 ○●		
	3.050					100,800 ○	
70	1.220			52,050 ○●			
	1.000 - 2.000				88,500 ○●		
	2.500						109,680 ○
	2.000 - 3.050					109,200 ○●	
75	1.220		7	55,660 ○●			
	2.000				94,500 ●		
	1.000 - 2.000				94,500 ○		
80	1.220			59,220 ○●			
	1.000 - 2.000				102,480 ○●		
	2.500						125,340 ○
	2.000 - 3.050					122,400 ○●	
85	2.000	1	6		108,000 ●		
	1.000 - 2.000				108,000 ○		
90	1.220	0,5	7	66,390 ○●			
	1.000 - 2.000				114,680 ○●		
	2.500						141,010 ○
	3.050					137,400 ○	
95	2.000	1	6		120,500 ●		
	1.000 - 2.000				120,500 ○		
100	1.220	0,5	7	73,570 ○●			
	1.000 - 2.000				126,880 ○●		
	2.500						156,680 ○
	2.000 - 3.050					153,000 ○●	
110	1.000	1	6		146,000 ○●		
	3.050					169,000 ○●	
120	1.000	0,5	9	90,920 ○			
	1.000 - 2.000				158,000 ○●		
	2.500						188,020 ○
	2.000 - 3.050					185,000 ○	
130	1.000	1	6,5	98,490 ○	171,000 ○●		
140			7	106,070 ○	184,000 ●		
	1.000 - 2.000				184,000 ○		

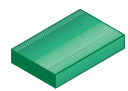


Platten

Farben

- dunkelgrau
- naturfarben
- schwarz
- blau
- gelb
- anthrazit
- hellgrün
- grün

Stärke	Längen	Toleranzen Stärke mm		PA 6 G			
				Breite: 610 mm	Breite: 1.000 mm	Breite: 1.220 mm	Breite: 1.250 mm
				kg/m	kg/m	kg/m	kg/m
mm	mm	min.	max.				
150	1.000	1	7,5	113,650 ○	197,000 ●		
	1.000 - 2.000				197,000 ○		
160	1.000		8	121,220 ○	209,000 ○ ●		
165			6		215,500 ○ ●		
180		0	9	136,380 ○			
200			10	151,530 ○			
250		5	12,5	189,410 ○			
300		6	15	227,290 ○			

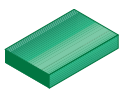


Platten

Farben

- dunkelgrau
- naturfarben
- schwarz
- blau
- gelb
- anthrazit
- hellgrün
- grün

Stärke	Längen	Toleranzen Stärke mm		PA 6 G +ÖL			PA 6 G +PE
				Breite: 1.000 mm	Breite: 1.220 mm	Breite: 1.250 mm	Breite: 1.000 mm
				kg/m	kg/m	kg/m	kg/m
8	1.000 - 2.000	0,2	1,7	11,500 ○ ● ● ●			
	2.000			11,500 ●			11,500 ● ●
	2.500					13,220 ● ●	
10	1.000 - 2.000	0,5	2,5	13,510 ○ ● ● ● ●			
	2.000				16,800 ○ ●		13,500 ● ● ●
	2.500					16,200 ● ●	
	3.050			16,340 ●			
11	2.000	0,5	1,7	13,950 ● ● ●			13,950 ●
	2.500					17,700 ● ●	
12	1.000 - 2.000	0,3	2,5	16,000 ○ ● ● ● ●			
	2.000				19,800 ○ ●		16,000 ● ● ●
	2.500					19,190 ● ●	
	3.050				19,200 ●		
15	2.000	0,5		20,000 ○ ●			20,000 ● ● ●
	1.000 - 2.000			20,000 ● ●			
	2.500					23,670 ● ●	
	2.000 - 3.050				24,600 ○ ●		
16	1.000 - 2.000	0,3		21,500 ○ ● ● ●			
	2.000			21,500 ●			21,500 ● ● ●
	2.500					25,160 ● ●	
	3.050				24,890 ●		
	2.000 - 3.050				26,400 ○ ●		
18	2.000	0,5		24,500 ○ ● ● ●			
	1.000 - 2.000			24,500 ●			
20	1.000 - 2.000	0,3	3	26,000 ○ ● ● ● ●			25,600 ●
	2.000						26,000 ●
	2.500					31,140 ● ●	
	3.050				30,570 ●		
	2.000 - 3.050				31,800 ○ ●		
22	2.000	0,5	2,5	29,000 ○ ● ● ●			
	1.000 - 2.000			29,000 ●			
	3.050				35,700 ○ ●		
25	1.000 - 2.000	0,3		32,000 ○ ● ● ● ●			
	2.000						32,000 ● ● ●
	2.500					38,830 ● ●	
	3.050				37,670 ●		
	2.000 - 3.050				39,000 ○ ●		
30	1.000 - 2.000	0,5	3,5	38,500 ○ ● ● ● ●			
	2.000						38,500 ● ● ●
	2.500					46,600 ● ●	
	3.050				45,310 ●		
	2.000 - 3.050				48,000 ○ ●		
35	2.000	0,5		45,300 ○ ● ● ●			45,300 ● ● ●
	1.000 - 2.000			45,300 ●			
	2.500					54,360 ● ●	
	3.050				52,430 ●		
	2.000 - 3.050				55,800 ○ ●		
40	1.000 - 2.000	0,5		51,000 ○ ● ● ● ●			49,700 ●
	2.000						51,000 ●
	2.500					62,130 ● ●	

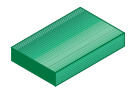


Platten

Farben

- dunkelgrau
- naturfarben
- schwarz
- blau
- gelb
- anthrazit
- hellgrün
- grün

Stärke	Längen	Toleranzen Stärke mm		PA 6 G +ÖL			PA 6 G +PE	
				Breite: 1.000 mm	Breite: 1.220 mm	Breite: 1.250 mm	Breite: 1.000 mm	
				kg/m	kg/m	kg/m	kg/m	
40	3.050	0,5	3,5		59,540 ●			
	2.000 - 3.050				62,400 ○●			
45	2.000	5		57,000 ○●●			57,000 ●●	
	1.000 - 2.000			57,000 ●				
	2.500					69,890 ●●		
	3.050				66,660 ●			
	2.000 - 3.050				70,200 ○●			
50	1.000 - 2.000			63,500 ○●●●				
	2.000						63,500 ●●	
	2.500					77,660 ●●		
	3.050				73,770 ●			
	2.000 - 3.050				78,000 ○●			
55	2.000			70,000 ○●●			70,000 ●●	
	1.000 - 2.000			70,000 ●				
	2.500					85,420 ●●		
	3.050				86,400 ○●			
60	1.000 - 2.000			76,000 ○●●●			74,300 ●	
	2.000			76,000 ●	93,000 ○		74,300 ●	
	2.500					93,190 ●●		
	3.050				88,890 ●			
	2.000 - 3.050				93,000 ●			
65	1.000 - 2.000			82,500 ○●				
	2.000			82,500 ●●			82,500 ●	
	3.050				100,800 ○●			
70	1.000 - 2.000			88,500 ○●				
	2.000			88,500 ●●			88,500 ●	
	3.050				103,080 ●			
	2.000 - 3.050				109,200 ○●			
75	1.000 - 2.000	7		94,100 ○				
	2.000			94,500 ●●●			94,500 ●	
80	1.000 - 2.000			101,000 ○●				
	2.000			101,000 ●●			101,000 ●	
	3.050				117,310 ●			
	2.000 - 3.050				122,400 ○●			
85	2.000	1	6	108,000 ○●●●			108,000 ●	
90	1.000 - 2.000	0,5	7	113,000 ○●				
	2.000			113,000 ●●			113,000 ●	
	3.050					137,400 ○●		
95	2.000	1	6	120,500 ○●●●			120,500 ●	
100	1.000 - 2.000	0,5	7	126,000 ○●				
	2.000			126,000 ●●			126,000 ●	
	3.050					145,740 ●		
	2.000 - 3.050					153,000 ○●		
110	1.000	1	6	146,000 ○●●●			146,000 ●	
	3.050					169,000 ○●		
120	1.000	0,5	9	158,000 ○●●●			158,000 ●	
	2.000 - 3.050					185,000 ○●		
130	1.000	1	6,5	171,000 ○●●●			171,000 ●	
140			7	184,000 ○●●			184,000 ●	
150			7,5	197,000 ○●●			197,000 ●	

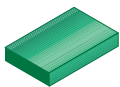


Platten

Farben

- dunkelgrau
- naturfarben
- schwarz
- blau
- gelb
- anthrazit
- hellgrün
- grün

Stärke	Längen	Toleranzen Stärke mm		PA 6 G +ÖL			PA 6 G +PE
				Breite: 1.000 mm	Breite: 1.220 mm	Breite: 1.250 mm	Breite: 1.000 mm
mm	mm	min.	max.	kg/m	kg/m	kg/m	kg/m
160	1.000	1	8	209,000 ○ ● ●			209,000 ●
165				215,500 ○ ● ●			215,500 ●

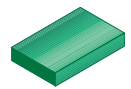


Platten

Farben

- dunkelgrau
- naturfarben
- schwarz
- blau
- gelb
- anthrazit
- hellgrün
- grün

Stärke	Längen	Toleranzen Stärke mm		PA 6 G +PE	PA 6 G +HI	PA 6 G +MOS		
				Breite: 1.250 mm	Breite: 1.220 mm	Breite: 610 mm	Breite: 1.000 mm	
mm	mm	min.	max.	kg/m	kg/m	kg/m	kg/m	
8	2.000	0,2	1,7				10,510 ●	
	2.500							
10	2.000	2,5		13,220 ●				
	2.500							12,890 ●
	3.050				16,570 ●			
11	2.000	0,5	1,7				14,080 ●	
	2.500							
12	2.000	0,3	2,5				15,260 ●	
	2.500							
	3.050				19,440 ●			
15	2.000	0,5					18,830 ●	
	2.500							
16	2.000	0,3					20,010 ●	
	2.500							
	3.050				25,200 ●			
20	2.000		3				24,770 ●	
	2.500							
	3.050				30,970 ●			
25	2.000	2,5					30,880 ●	
	2.500							
	3.050				38,160 ●			
30	2.000	0,5	3,5				37,060 ●	
	2.500							
	3.050				45,930 ●			
35	2.000						43,230 ●	
	2.500							
	3.050				53,150 ●			
40	2.000						49,410 ●	
	2.500							
	3.050				60,360 ●			
45	2.000	5					55,590 ●	
	2.500							
50	1.000 - 2.000						65,880 ●	
	2.500							
	3.050				74,750 ●			
55	2.000						67,940 ●	
	2.500							
60	1.000 - 2.000						78,080 ●	
	2.500							
70	1.000 - 2.000	7					90,280 ●	
80								102,480 ●
90								114,680 ●
100								126,880 ●
110	1.000			1	6			
120	1.000 - 2.000	0,5	9				90,920 ●	
								151,530 ●
130	1.000	1	6,5				98,490 ●	
140								106,070 ●
150								113,650 ●
160								121,220 ●
170								136,380 ●
180				0	9			

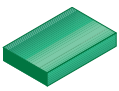


Platten

Farben

- dunkelgrau
- naturfarben
- schwarz
- blau
- gelb
- anthrazit
- hellgrün
- grün

Stärke	Längen	Toleranzen Stärke mm		PA 6 G +PE	PA 6 G +HI	PA 6 G +MOS	
				Breite: 1.250 mm	Breite: 1.220 mm	Breite: 610 mm	Breite: 1.000 mm
mm	mm	min.	max.	kg/m	kg/m	kg/m	kg/m
200	1.000	0	10			151,530 ●	

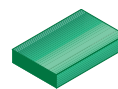


Platten

Farben

- dunkelgrau
- naturfarben
- schwarz
- blau
- gelb
- anthrazit
- hellgrün
- grün

Stärke	Längen	Toleranzen Stärke mm		PA 6 G +MOS		PA 6 G +GL		
				Breite: 1.220 mm	Breite: 1.250 mm	Breite: 1.000 mm	Breite: 1.220 mm	
mm	mm	min.	max.	kg/m	kg/m	kg/m	kg/m	
8	2.500	0,2	1,7		13,330 ●			
10	2.000	0,3	2,5	16,650 ●			16,350 ●	
	2.500				16,340 ●			
11		0,5	1,7		17,850 ●			
12	2.000	0,3	2,5	19,530 ●				
	2.500				19,360 ●			
15		0,5			23,880 ●			
16	2.000	0,3		25,330 ●			24,880 ●	
	2.500				25,380 ●			
20	2.000	0,5	3	31,100 ●			30,580 ●	
	1.000 - 2.000					25,600 ●		
	2.500				31,410 ●			
25	2.000	0,5	2,5	38,350 ●			37,680 ●	
	2.500				39,170 ●			
30	2.000	0,5	3,5	46,130 ●			45,330 ●	
	2.500				47,000 ●			
35	2.000	0,5	3,5	61,450 ●				
	2.500				54,840 ●			
40	2.000	0,5	3,5	70,200 ●				
	1.000 - 2.000					49,700 ●		
	2.500				62,670 ●			
45		5			70,500 ●			
50	2.000	0,5	5	87,750 ●				
	2.500				78,340 ●			
55		0,5	5		86,170 ●			
60	2.000	0,5	5	105,300 ●				
	1.000 - 2.000					74,300 ●		
	2.500				94,010 ●			
70		0,5	5		109,680 ●			
80	2.000	0,5	7	140,400 ●				
	2.500				125,340 ●			
90		0,5	7		141,010 ●			
100		0,5	7		156,680 ●			
120		0,5	9		188,020 ●			

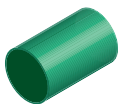


Platten

Farben

- dunkelgrau
- naturfarben
- schwarz
- blau
- gelb
- anthrazit
- hellgrün
- grün

Stärke	Längen	Toleranzen Stärke mm		PA 6 G +GI		PA 6 G NYLATRON®GSM
				Breite: 300 mm	Breite: 580 mm	Breite: 1.220 mm
mm	mm	min.	max.	kg/m	kg/m	kg/m
10	580	0,2	2,5		7,440 ●	
	2.000					
12		0,3			19,530 ●	
			16			25,330 ●
20		3				31,100 ●
			25	2,5		
30		800			0,5	3,5
	2.000					
35					53,350 ●	
		40				60,600 ●
50			800	5		18,260 ●
	2.000					75,050 ●
60		800			21,950 ●	
	2.000					90,450 ●
80		600	7		28,800 ●	
	2.000					119,350 ●
100		500			36,300 ●	

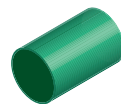


Rundstäbe

Farben

- dunkelgrau
- naturfarben
- schwarz
- blau
- gelb
- anthrazit
- hellgrün
- grün

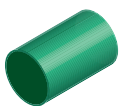
mm	Längen mm	Toleranzen außen mm		PA 6 G	PA 6 G +ÖL	PA 6 G +PE
		min.	max.	kg/m	kg/m	kg/m
30	1.000	0,2	1,4	0,900 ○ ●	0,850 ● ● ●	0,850 ●
35			1,1	1,200 ○ ●	1,200 ● ● ●	
40			1,4	1,500 ○ ●	1,500 ● ● ●	1,500 ●
45		0,3	1,3	1,900 ○ ●	1,900 ● ● ●	
50		0,25	3		2,400 ●	2,400 ●
	1.000 - 3.000			2,400 ○ ●	2,400 ● ● ●	
	3.000					2,400 ●
55	1.000	0,28		2,930 ●	2,900 ●	
	1.000 - 3.000			2,930 ○	2,900 ● ● ●	
	3.000					2,900 ●
56	1.000 - 3.000	0,5	1,5	2,990 ○		
60	1.000	0,3	4		3,400 ● ● ●	3,400 ●
	1.000 - 3.000			3,600 ○ ●	3,400 ● ● ●	
	3.000					3,450 ●
65	1.000				4,000 ●	
	1.000 - 3.000			4,200 ○ ●	4,000 ● ● ●	
	3.000					4,050 ●
70	1.000				4,800 ● ● ●	4,800 ●
	1.000 - 3.000			4,840 ○ ●	4,800 ● ● ●	
	3.000					4,700 ●
75	1.000	0,38			5,600 ●	
	1.000 - 3.000			5,530 ○ ●	5,600 ● ● ●	
	3.000					5,400 ●
80	1.000	0,4		6,270 ●	6,270 ● ● ●	6,200 ●
	1.000 - 3.000			6,270 ○ ●	6,270 ● ● ●	
	3.000					6,200 ●
85	1.000			7,050 ●	6,930 ●	
	1.000 - 2.000			7,050 ●		
	1.000 - 3.000			7,050 ○		
	3.000				6,930 ● ● ●	6,930 ●
90	1.000			7,880 ●	7,800 ○ ● ● ●	7,800 ●
	1.000 - 3.000			7,880 ○ ●	7,800 ● ● ●	
	3.000					7,800 ●
95	1.000				8,700 ○ ● ● ●	
	1.000 - 2.000			8,760 ○ ●		
100	1.000			9,900 ●	9,800 ○	9,800 ●
	1.000 - 2.000				9,800 ●	
	1.000 - 3.000			9,900 ○ ●	9,800 ● ● ●	
	3.000					9,800 ●
105	1.000	0,53		10,700 ●		
	1.000 - 3.000			10,700 ○		
110	1.000	0,55	5	11,900 ●	11,700 ○ ● ●	11,700 ●
	1.000 - 2.000				11,700 ●	
	1.000 - 3.000			11,900 ○ ●	11,700 ● ● ●	
	3.000					11,700 ●
115	1.000	1,5			12,900 ○ ●	
	1.000 - 2.000			12,900 ○ ●	12,900 ●	
120	1.000	0,6		14,200 ●	14,200 ○ ● ●	14,200 ●
	1.000 - 2.000				14,200 ●	
	1.000 - 3.000			14,200 ○ ●	14,200 ● ● ●	
	3.000					14,200 ●



Rundstäbe

- Farben**
- dunkelgrau
 - naturfarben
 - schwarz
 - blau
 - gelb
 - anthrazit
 - hellgrün
 - grün

mm	Längen mm	Toleranzen außen mm		PA 6 G	PA 6 G +ÖL	PA 6 G +PE	
		min.	max.	kg/m	kg/m	kg/m	
125	1.000	0,63	6	15,700 ●	15,400 ○		
	1.000 - 2.000				15,400 ●		
	1.000 - 3.000				15,700 ○ ●	15,400 ●	
	3.000						15,000 ●
130	1.000	0,65	5	16,900 ●	16,900 ○ ●	16,900 ● ●	
	1.000 - 2.000				16,900 ●		
	1.000 - 3.000				16,900 ○ ●		
135	1.000	1,5			18,200 ○ ●		
	1.000 - 2.000			18,200 ○ ●	18,200 ●		
140	1.000	0,7		20,000 ●	20,000 ○ ● ●	20,000 ● ●	
	1.000 - 2.000				20,000 ●		
	1.000 - 3.000			20,000 ○ ●			
145	1.000	1,5		21,300 ○ ●	21,300 ○ ● ●		
150		0,75	5,3	22,500 ●	22,500 ○ ●	22,500 ● ●	
	1.000 - 2.000					22,500 ● ●	
	1.000 - 3.000				22,500 ○ ●		
155	1.000	1,5	5	23,900 ○ ●	23,900 ○ ● ●		
160		0	7		25,100 ○ ●	25,100 ● ●	
	500 - 2.000				25,100 ●		
	1.000 - 2.000					25,100 ●	
	500 - 3.000				25,100 ○		
165	1.000	2		26,500 ○ ●	26,500 ○ ● ●		
170		0,85			28,400 ○ ●	28,400 ●	
	1.000 - 2.000			28,500 ●	28,400 ●		
	500 - 3.000			28,500 ○			
175	1.000	2		29,700 ○ ●	29,700 ○ ● ●		
180		0			31,500 ○ ●	31,500 ●	
	500 - 2.000				32,000 ●		
	1.000 - 2.000					31,500 ●	
	500 - 3.000				32,000 ○		
190	1.000	0,95			35,100 ○ ●		
	1.000 - 2.000			35,500 ●	35,100 ●		
	500 - 3.000			35,500 ○			
200	1.000	0	9		39,200 ○ ●	39,200 ●	
	500 - 2.000				39,200 ●		
	1.000 - 2.000					39,200 ●	
	500 - 3.000				39,200 ○		
210	500 - 1.000	1,05		43,000 ○			
	1.000			43,000 ●	43,200 ○ ● ●		
220		1,1			48,000 ○ ●		
	500 - 2.000			48,000 ○ ●			
230	1.000	1,15			50,800 ○ ● ●		
	500 - 2.000			51,300 ○			
	1.000 - 2.000			51,300 ●			
240	500 - 1.000	1,2		57,000 ○			
	1.000			57,000 ●	56,800 ○ ● ●		
250		1,25			60,000 ○ ● ●		
	500 - 2.000			61,000 ○ ●			
260	500 - 1.000	1,3	9,1	66,200 ○			
	1.000				66,200 ●	65,400 ○ ● ●	
270		1,35	9,45	71,000 ○ ●	69,600 ○ ● ●		

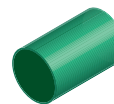


Rundstäbe

Farben

- dunkelgrau
- ⊙ naturfarben
- schwarz
- blau
- gelb
- anthrazit
- hellgrün
- grün

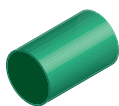
mm	Längen mm	Toleranzen außen mm		PA 6 G	PA 6 G +ÖL	PA 6 G +PE
		min.	max.	kg/m	kg/m	kg/m
275	1.000	3	9	74,000 ⊙ ●		
280		1,4	9,8		75,800 ⊙ ● ●	
	500 - 2.000			77,000 ⊙		
	1.000 - 2.000			77,000 ●		
290	1.000	2	9	82,000 ⊙ ●	80,400 ⊙ ● ●	
300		1,5	10,5		87,800 ⊙ ● ●	
	500 - 2.000			87,800 ⊙		
	1.000 - 2.000			87,000 ●		
310	1.000	1,55	11	93,000 ⊙ ●	93,600 ⊙ ● ●	
320		1,6	11,2			101,500 ⊙ ● ●
	1.000 - 2.000			101,500 ⊙ ●		
325	500 - 1.000	4	11	101,800 ⊙		
	1.000			101,800 ●		
330		3		108,400 ⊙	108,400 ⊙ ● ●	
	1.000 - 2.000			108,400 ●		
340	1.000			116,000 ⊙ ●	116,100 ⊙ ● ●	
350		1,5	13,5			123,600 ⊙ ● ●
	1.000 - 2.000			123,600 ⊙ ●		
360	1.000	3	11	128,000 ⊙ ●	128,200 ⊙ ● ●	
370				132,000 ●	132,000 ⊙ ● ●	
	1.000 - 2.000			132,000 ⊙		
375	500 - 1.000	4		134,700 ⊙		
380	1.000	3		140,000 ⊙ ●	140,300 ⊙ ● ●	
390				151,500 ⊙ ●	151,500 ⊙ ● ●	
400		2	14			155,000 ⊙ ● ●
	500 - 2.000			155,000 ⊙ ●		
410	1.000	4	13	165,000 ⊙ ●	165,000 ⊙ ● ●	
420				174,000 ⊙ ●	173,800 ⊙ ● ●	
430				183,500 ⊙ ●	183,500 ⊙ ● ●	
440				192,000 ⊙ ●	192,000 ⊙ ● ●	
450		1,5	15,75			195,000 ⊙ ● ●
	500 - 2.000			195,000 ⊙		
	1.000 - 2.000			195,000 ●		
460	1.000	4	13	208,100 ⊙ ●	208,100 ⊙ ● ●	
470				216,600 ⊙ ●	216,600 ⊙ ● ●	
475		1,5		221,000 ⊙ ●		
480		4		226,000 ⊙ ●	226,000 ⊙ ● ●	
490				237,000 ⊙ ●	237,000 ⊙ ● ●	
500		1,5				248,500 ⊙ ● ●
	500 - 2.000			239,500 ⊙		
	1.000 - 2.000			239,500 ●		
510	1.000	5	15	254,500 ⊙ ●	254,500 ⊙ ● ●	
520				262,400 ⊙ ●	262,400 ⊙ ● ●	
530				274,500 ⊙ ●	274,500 ⊙ ● ●	
540				284,800 ⊙ ●	284,800 ⊙ ● ●	
550				301,700 ⊙ ●	301,700 ⊙ ● ●	
560				309,000 ⊙ ●	309,000 ⊙ ● ●	
570				323,500 ⊙ ●	323,500 ⊙ ● ●	
580				329,000 ⊙ ●	329,000 ⊙ ● ●	
590				343,700 ⊙ ●	343,700 ⊙ ● ●	
600				352,900 ⊙ ●	352,900 ⊙ ● ●	



Rundstäbe

- Farben**
- dunkelgrau
 - ⊙ naturfarben
 - schwarz
 - blau
 - gelb
 - anthrazit
 - hellgrün
 - grün

mm	Längen mm	Toleranzen außen mm		PA 6 G	PA 6 G +ÖL	PA 6 G +PE
		min.	max.	kg/m	kg/m	kg/m
610	1.000	5	15	362,200 ⊙ ●	362,200 ⊙ ● ●	
620				377,600 ⊙ ●	377,600 ⊙ ● ●	
625					383,600 ⊙ ● ●	
630				386,000 ⊙ ●	386,000 ⊙ ● ●	
640				397,000 ⊙ ●	397,000 ⊙ ● ●	
650				415,600 ⊙ ●	415,600 ⊙ ● ●	
660				425,700 ⊙ ●	425,700 ⊙ ● ●	
670				441,100 ⊙ ●	441,100 ⊙ ● ●	
680				454,100 ⊙ ●	454,100 ⊙ ● ●	
690				468,700 ⊙ ●	468,700 ⊙ ● ●	
700				488,900 ⊙ ●	488,900 ⊙ ● ●	
710				498,500 ⊙ ●	498,500 ⊙ ● ●	

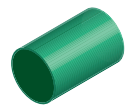


Rundstäbe

Farben

- dunkelgrau
- naturfarben
- schwarz
- blau
- gelb
- anthrazit
- hellgrün
- grün

mm	Längen mm	Toleranzen außen mm		PA 6 G +HI	PA 6 G +MOS	PA 6 G NYLATRON®GSM
		min.	max.	kg/m	kg/m	kg/m
50	1.000 - 3.000	0,25	3	2,390 ●	2,420 ●	2,410 ●
	3.000				2,830 ●	
55		0,28			3,430 ●	
56	1.000 - 3.000	0,5	1,5		3,000 ●	3,000 ●
60	1.000 - 3.000	0,3	4		3,460 ●	3,460 ●
	3.000				3,460 ●	
65	1.000 - 3.000				4,050 ●	4,050 ●
	3.000				4,050 ●	
70	1.000 - 3.000				4,740 ●	4,680 ●
	3.000				4,740 ●	
75	1.000 - 3.000	0,38			5,440 ●	5,410 ●
	3.000				5,440 ●	
80	1.000 - 3.000	0,4			6,190 ●	6,140 ●
	3.000				6,190 ●	
85	1.000 - 3.000				7,000 ●	6,980 ●
	3.000				7,000 ●	
90					7,840 ●	
100	1.000 - 3.000			9,570 ●	9,680 ●	9,610 ●
	3.000				9,680 ●	
105		0,53			10,670 ●	
110	1.000 - 3.000	0,55	5		11,700 ●	11,630 ●
	3.000				11,700 ●	
120		0,6			13,930 ●	
125		0,63	6		15,120 ●	
130	1.000 - 3.000	0,65	5		16,400 ●●	16,300 ●
140		0,7			19,000 ●	
150		0,75	5,3		21,800 ●	
160	500 - 1.000	0	7		50,000 ●	25,000 ●
	1.000 - 3.000				25,000 ●	
170		0,85			28,000 ●	
180	500 - 1.000	0			63,000 ●	31,500 ●
	1.000 - 3.000				31,500 ●	
190		0,95			34,930 ●	
200	500 - 1.000	0	9		77,400 ●	38,650 ●
	1.000 - 3.000				38,700 ●	
210	1.000	1,05			42,700 ●	
220		1,1			46,840 ●	
230		1,15			51,200 ●	
240		1,2			55,700 ●	
250	500 - 1.000	1,25			121,200 ●	60,600 ●
	1.000				60,600 ●	
260		1,3	9,1		65,420 ●	
270		1,35	9,45		70,600 ●	
280		1,4	9,8		75,900 ●	
300		1,5	10,5		87,100 ●	
310		1,55	11		93,000 ●	
320		1,6	11,2		99,100 ●	
350		1,5	13,5		118,500 ●	
400		2	14		154,800 ●	
450		1,5	15,75		196,000 ●	

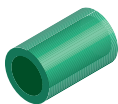


Rundstäbe

Farben

- dunkelgrau
- naturfarben
- schwarz
- blau
- gelb
- anthrazit
- hellgrün
- grün

mm	Längen mm	Toleranzen außen mm		PA 6 G +GI
		min.	max.	kg/m
30	1.000	0,2	1,4	0,900 ●
40				1,550 ●
50	1.500	0,25	3	2,320 ●
65	1.000	0,3	4	4,000 ●
79				0,4
100			4	9,290 ●
110		0,55	5	11,200 ●
150	850	0,75	5,3	20,590 ●



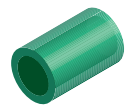
Hohlstäbe

Farben

○ naturfarben

● schwarz

mm	mm	Längen mm	Toleranzen außen mm		Toleranzen innen mm		PA 6 G
			min.	max.	min.	max.	kg/m
50	25	1.000 - 3.000	1	3	-2	-6	2,140 ○ ●
	30						2,000 ○ ●
	35						1,750 ○ ●
55	25						2,650 ○ ●
	30						2,500 ○ ●
	35						2,150 ○ ●
60	40						1,850 ○ ●
	25						3,500 ○ ●
	30						2,850 ○ ●
	35						2,720 ○ ●
	40						2,600 ○ ●
65	45						2,000 ○ ●
	25						3,820 ○ ●
	30						3,600 ○ ●
	35						3,320 ○ ●
	40						3,000 ○ ●
	45						2,640 ○ ●
70	50						2,230 ○ ●
	25	4,470 ○ ●					
	30	4,300 ○ ●					
	35	4,000 ○ ●					
	40	3,650 ○ ●					
	45	3,300 ○					
	50	3,300 ●					
75	55	1.000 1.000 - 3.000	5	-10	3,100 ○ ●		
	25				5,150 ○ ●		
	30				5,000 ○ ●		
	35				4,650 ○ ●		
	40				4,500 ○ ●		
	45				4,000 ○ ●		
	50				3,800 ○ ●		
	55				3,100 ○ ●		
	60				3,000 ○ ●		
	65				2,800 ○ ●		
80	30	5,800 ○ ●					
	35	5,400 ○ ●					
	40	5,200 ○ ●					
	45	4,700 ○ ●					
	50	4,500 ○ ●					
	55	4,200 ○ ●					
	60	3,700 ○ ●					
	65	2,800 ○ ●					
85	30	6,470 ○ ●					
	35	6,200 ○ ●					
	40	6,100 ○ ●					
	45	5,500 ○ ●					
	50	5,300 ○ ●					
	55	4,650 ○ ●					
	60	4,400 ○ ●					
	65	3,600 ○ ●					



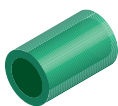
Hohlstäbe

Farben

○ naturfarben

● schwarz

mm	mm	Längen mm	Toleranzen außen mm		Toleranzen innen mm		PA 6 G
			min.	max.	min.	max.	kg/m
85	70	1.000 - 3.000	1	5	-2	-10	3,400 ○●
90	30						7,300 ○●
	35						7,000 ○●
	40						6,800 ○●
	45						6,350 ○●
	50						6,100 ○●
	55						5,500 ○●
	60						5,300 ○●
	65						4,700 ○●
	70						4,200 ○●
	75						3,500 ○●
95	35						7,900 ○●
	40						7,700 ○●
	45						7,200 ○●
	50						7,000 ○●
	55						6,350 ○●
	60						6,100 ○●
	65						5,300 ○●
	70						5,100 ○●
	75						4,100 ○●
	80						3,800 ○●
100	35						8,850 ○●
	40						8,700 ○●
	45						8,240 ○●
	50						8,000 ○●
	55						7,500 ○●
	60						7,100 ○●
	65						6,600 ○●
	70						6,000 ○●
	75						5,500 ○●
	80						4,800 ○●
105	35						9,800 ○●
	40						9,600 ○●
	45						9,100 ○●
	50						8,900 ○●
	55						8,250 ○●
	60						8,000 ○●
	65						7,200 ○●
	70						6,900 ○●
	75						6,000 ○●
	80						5,700 ○●
110	40						10,600 ○●
	45						10,200 ○●
	50						9,900 ○●
	55						9,300 ○●
	60						9,050 ○●
	65						8,540 ○●



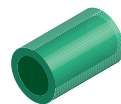
Hohlstäbe

Farben

○ naturfarben

● schwarz

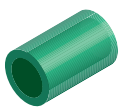
mm	mm	Längen mm	Toleranzen außen mm		Toleranzen innen mm		PA 6 G
			min.	max.	min.	max.	kg/m
110	70	1.000 - 3.000	1	5	-2	-10	8,000 ○ ●
	75						7,400 ○ ●
	80						6,740 ○ ●
	85						5,600 ○ ●
	90						5,300 ○ ●
	95						4,000 ○ ●
115	40						11,600 ○ ●
	45						11,200 ○ ●
	50						10,900 ○ ●
	55						10,400 ○ ●
	60						10,000 ○ ●
	65						9,300 ○ ●
	70						9,000 ○ ●
	75						8,100 ○ ●
	80						7,700 ○ ●
	85						6,650 ○ ●
	90						6,300 ○ ●
	95						5,000 ○ ●
	100						4,700 ○ ●
	120						40
45		12,900 ○ ●					
50		12,300 ○ ●					
55		12,100 ○ ●					
60		11,400 ○ ●					
65		11,100 ○ ●					
70		10,300 ○ ●					
75		9,900 ○ ●					
80		9,100 ○ ●					
85		8,500 ○ ●					
90		7,600 ○ ●					
95		7,000 ○ ●					
100		6,000 ○ ●					
105		5,200 ○ ●					
125	45						14,100 ○ ●
	50						13,400 ○ ●
	55						13,300 ○ ●
	60						12,500 ○ ●
	65						12,300 ○ ●
	70						11,400 ○ ●
	75						11,100 ○ ●
	80						10,200 ○ ●
	85						9,700 ○ ●
	90						8,800 ○ ●
	95						8,100 ○ ●
	100						7,200 ○ ●
130	40	1.000 - 2.000					15,000 ○
	45	1.000 - 3.000					15,300 ○ ●
	50						14,600 ○ ●



Hohlstäbe

- Farben**
 ○ naturfarben
 ● schwarz

mm	mm	Längen mm	Toleranzen außen mm		Toleranzen innen mm		PA 6 G
			min.	max.	min.	max.	kg/m
130	55	1.000 - 3.000	1	5	-2	-10	14,500 ○●
	60						13,700 ○●
	65						13,500 ○●
	70						12,600 ○●
	75						12,300 ○●
	80						11,400 ○●
	85						10,900 ○●
	90						10,000 ○●
	95						9,350 ○●
	100						8,400 ○●
	105						7,600 ○●
	110						6,700 ○●
	115						5,650 ○●
	140						40
45		1.000 - 3.000	17,900 ○●				
50			17,800 ○●				
55			17,000 ○●				
60			17,100 ○●				
65			16,000 ○●				
70			15,200 ○●				
75			15,400 ○●				
80			14,700 ○●				
85			13,500 ○●				
90			13,300 ○●				
95			11,900 ○●				
100			11,700 ○●				
105			10,200 ○●				
110	10,300 ○●						
115	8,200 ○●						
120	8,300 ○●						
125	6,100 ○●						
150	40	1.000 - 2.000					21,300 ○
	50	1.000 - 3.000					20,600 ○●
	55						19,900 ○●
	60						19,800 ○●
	65						18,800 ○●
	70						17,900 ○●
	75						18,200 ○●
	80						17,500 ○●
	85						16,300 ○●
	90						16,100 ○●
	95						14,700 ○●
	100						14,500 ○●
	105						12,900 ○●
	110						13,050 ○●
115	11,000 ○●						
120	11,100 ○●						
125	8,880 ○●						
130	8,950 ○●						
135	6,600 ○●						



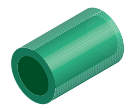
Hohlstäbe

Farben

○ naturfarben

● schwarz

mm	mm	Längen mm	Toleranzen außen mm		Toleranzen innen mm		PA 6 G					
			min.	max.	min.	max.	kg/m					
160	40	1.000 - 2.000	1	5	-2	-10	23,400 ○					
	50	1.000 - 3.000					22,700 ○					
	55						23,200 ○ ●					
	60						22,500 ○ ●					
	65						22,200 ○ ●					
	70						21,500 ○ ●					
	75						21,000 ○ ●					
	80						20,000 ○ ●					
	85						19,700 ○ ●					
	90						18,500 ○ ●					
	95						18,100 ○ ●					
	100						17,000 ○ ●					
	105						16,400 ○ ●					
	110						15,100 ○ ●					
	115						14,500 ○ ●					
	120						13,200 ○ ●					
	125						12,400 ○ ●					
	170						130	1.000 - 3.000	1	5	-2	-10
135			10,000 ○ ●									
140		8,700 ○ ●										
145		7,600 ○ ●										
40		1.000 - 2.000	1	5	-2	-10	26,800 ○					
50		1.000 - 3.000					26,100 ○					
55							26,400 ○ ●					
60							25,900 ○ ●					
65							25,400 ○ ●					
70							24,500 ○ ●					
75							24,200 ○ ●					
80							23,500 ○ ●					
85							22,800 ○ ●					
90							22,000 ○ ●					
95							21,300 ○ ●					
100							20,000 ○ ●					
105							19,500 ○ ●					
110							18,500 ○ ●					
115	17,600 ○ ●											
120	16,500 ○ ●											
125	15,500 ○ ●											
180	130						1.000 - 3.000	1	5	-2	-10	14,400 ○ ●
	135		13,200 ○ ●									
	140	12,100 ○ ●										
	145	10,800 ○ ●										
	150	9,600 ○ ●										
	155	8,100 ○ ●										
160	40	1.000 - 2.000	1	5	-2	-10	29,800 ○					
	50	1.000 - 3.000					29,100 ○					
	60						28,600 ○ ●					
	65						28,700 ○ ●					
	70						28,000 ○ ●					
75	27,500 ○ ●											



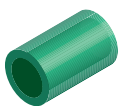
Hohlstäbe

Farben

○ naturfarben

● schwarz

mm	mm	Längen mm	Toleranzen außen mm		Toleranzen innen mm		PA 6 G					
			min.	max.	min.	max.	kg/m					
180	80	1.000 - 3.000	1	5	-2	-10	26,500 ○●					
	85						26,150 ○●					
	90						25,000 ○●					
	95						24,600 ○●					
	100						23,500 ○●					
	105						22,900 ○●					
	110						21,500 ○●					
	115						21,000 ○●					
	120						19,600 ○●					
	125						18,900 ○●					
	130						17,500 ○●					
	135						16,600 ○●					
	140						15,100 ○●					
	145						14,100 ○●					
	150						12,600 ○●					
	155						11,400 ○●					
160	10,000 ○●											
165	8,600 ○●											
190	40	1.000 - 2.000					33,630 ○					
	50						32,930 ○					
	60						32,100 ○					
	190	65					1.000 - 3.000					32,700 ○●
		70										31,100 ○●
		75										31,500 ○●
		80										30,000 ○●
		85										30,200 ○●
		90										29,000 ○●
		95										28,700 ○●
		100										27,500 ○●
		105										26,900 ○●
		110										25,500 ○●
		115										25,000 ○●
		120										23,500 ○●
		125										23,000 ○●
		130										21,500 ○●
		135										20,700 ○●
		140										19,000 ○●
		145										18,200 ○●
150	16,500 ○●											
155	15,600 ○●											
160	14,000 ○●											
165	12,800 ○●											
170	11,000 ○●											
175	9,750 ○●											
200	40	1.000 - 2.000					37,300 ○					
	50						36,600 ○					
	60						35,800 ○					
	200	65					1.000 - 3.000					36,400 ○●
		70										35,000 ○●
		75										35,300 ○●



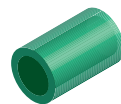
Hohlstäbe

Farben

○ naturfarben

● schwarz

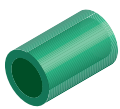
mm	mm	Längen mm	Toleranzen außen mm		Toleranzen innen mm		PA 6 G
			min.	max.	min.	max.	kg/m
200	80	1.000 - 3.000	1	5	-2	-10	34,000 ○ ●
	85						33,900 ○ ●
	90						32,500 ○ ●
	95						32,400 ○ ●
	100						31,000 ○ ●
	105						30,700 ○ ●
	110						29,000 ○ ●
	115						28,800 ○ ●
	120						27,100 ○ ●
	125						26,700 ○ ●
	130						25,000 ○ ●
	135						24,400 ○ ●
	140						22,600 ○ ●
	145						22,000 ○ ●
	150						20,100 ○ ●
	155						19,300 ○ ●
	160						17,500 ○ ●
	165						16,500 ○ ●
170	14,500 ○ ●						
175	13,500 ○ ●						
180	11,500 ○ ●						
185	10,300 ○ ●						
210	40	1.000 - 2.000					41,200 ○
	50						40,500 ○
	60						39,700 ○
	70	1.000 - 3.000					38,600 ○ ●
	75						38,200 ○ ●
	80						37,400 ○ ●
	85						37,800 ○ ●
	90						36,500 ○ ●
	95						36,300 ○ ●
	100						34,500 ○ ●
	105						34,300 ○ ●
	110						33,000 ○ ●
	115						32,700 ○ ●
	120						31,000 ○ ●
	125						30,600 ○ ●
	130						28,800 ○ ●
	135						28,300 ○ ●
	140						26,500 ○ ●
	145						25,900 ○ ●
	150						24,000 ○ ●
	155						23,200 ○ ●
160						21,300 ○ ●	
165						20,400 ○ ●	
170						18,500 ○ ●	
175						17,400 ○ ●	
180						15,500 ○ ●	
185						14,200 ○ ●	
190						12,100 ○ ●	



Hohlstäbe

- Farben**
 ◉ naturfarben
 ● schwarz

mm	mm	Längen mm	Toleranzen außen mm		Toleranzen innen mm		PA 6 G
			min.	max.	min.	max.	kg/m
210	195	1.000 - 3.000	1	5	-2	-10	10,800 ◉●
220	40	1.000 - 2.000	1	5	-2	-10	44,800 ◉
	50						44,100 ◉
	60						43,300 ◉
	70						42,300 ◉
	75	1.000 - 3.000					42,000 ◉●
	80						41,000 ◉●
	85						40,800 ◉●
	90						39,600 ◉●
	95						39,300 ◉●
	100						38,000 ◉●
	105						37,700 ◉●
	110						36,500 ◉●
	115						36,000 ◉●
	120						35,000 ◉●
	125						34,700 ◉●
	130						33,000 ◉●
	135						32,400 ◉●
	140						30,500 ◉●
	145						30,000 ◉●
	150						28,000 ◉●
	155						27,300 ◉●
	160						25,500 ◉●
	165						24,500 ◉●
	170	3.000					22,500 ●
		1.000 - 3.000					22,500 ◉
							21,500 ◉●
							19,000 ◉●
		18,300 ◉●					
		16,000 ◉●					
		14,900 ◉●					
		12,500 ◉●					
		11,400 ◉●					
230	40	1.000 - 2.000	1	5	-2	-10	49,100 ◉
	50						48,400 ◉
	60						47,600 ◉
	70						46,400 ◉
	75	1.000 - 3.000					46,100 ◉●
	80						46,000 ◉●
	85						45,400 ◉●
	90						44,900 ◉●
	95						44,700 ◉●
	100						43,500 ◉●
	105						42,900 ◉●
	110						42,000 ◉●
	115						41,000 ◉●
	120						39,300 ◉●
	125						39,000 ◉●
	130						37,500 ◉●
135	36,700 ◉●						



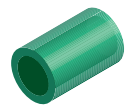
Hohlstäbe

Farben

○ naturfarben

● schwarz

mm	mm	Längen mm	Toleranzen außen mm		Toleranzen innen mm		PA 6 G
			min.	max.	min.	max.	kg/m
230	140	1.000 - 3.000	1	5	-2	-10	35,500 ○●
	145						34,300 ○●
	150						33,000 ○●
	155						31,600 ○●
	160						29,200 ○●
	165						28,800 ○●
	170						26,300 ○●
	175						25,800 ○●
	180						23,200 ○●
	185						22,600 ○●
	190						19,900 ○●
	195						19,200 ○●
	200						17,500 ○●
	205						15,700 ○●
	210						14,000 ○●
	215						11,900 ○●
240	40	1.000 - 2.000					53,900 ○
	50						53,200 ○
	60						52,300 ○
	70						51,400 ○
	80	1.000 - 3.000					51,200 ○●
	85						50,700 ○●
	90						48,900 ○●
	95						48,600 ○●
	100						48,000 ○●
	105						47,400 ○●
	110						45,700 ○●
	115						44,800 ○●
	120						43,700 ○●
	125						42,600 ○●
	130						41,600 ○●
	135						40,200 ○●
	140						39,500 ○●
	145						38,000 ○●
	150						36,700 ○●
	155						35,300 ○●
	160						34,000 ○●
	165						32,500 ○●
	170						31,500 ○●
	175						30,200 ○●
	180						28,500 ○●
	185						26,300 ○●
	190						24,800 ○●
	195						22,900 ○●
200	21,400 ○●						
205	20,100 ○●						
210	18,500 ○●						
215	16,360 ○●						
220	14,500 ○●						
225	12,440 ○●						

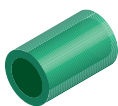


Hohlstäbe

Farben

- ◉ naturfarben
- schwarz

mm	mm	Längen mm	Toleranzen außen mm		Toleranzen innen mm		PA 6 G
			min.	max.	min.	max.	kg/m
250	50	1.000	2	10	-2	-20	60,800 ◉
	55						60,800 ◉
	60						59,900 ◉
	65						59,500 ◉
	70						58,800 ◉
	75						58,300 ◉
	80	1.000 - 3.000					57,700 ◉ ●
	85						57,000 ◉ ●
	90						56,800 ◉ ●
	95						56,400 ◉ ●
	100						54,600 ◉ ●
	105						54,000 ◉ ●
	110						53,200 ◉ ●
	115						52,800 ◉ ●
	120						51,200 ◉ ●
	125						49,800 ◉ ●
	130						49,000 ◉ ●
	135						47,800 ◉ ●
	140						46,700 ◉ ●
	145						45,800 ◉ ●
	150						44,100 ◉ ●
	155						42,400 ◉ ●
	160						41,400 ◉ ●
	165						39,800 ◉ ●
	170	38,500 ◉ ●					
	175	36,600 ◉ ●					
	180	35,400 ◉ ●					
	185	33,600 ◉ ●					
190	32,100 ◉ ●						
195	30,400 ◉ ●						
200	28,600 ◉ ●						
205	27,000 ◉ ●						
210	25,000 ◉ ●						
215	23,400 ◉ ●						
220	21,100 ◉ ●						
225	19,700 ◉ ●						
230	17,700 ◉ ●						
235	15,800 ◉ ●						
260	50	1.000	2	10	-2	-20	65,700 ◉
	55						65,400 ◉
	60						64,800 ◉
	65						64,400 ◉
	70						63,900 ◉
	75						63,300 ◉
	80						62,600 ◉
	90						61,200 ◉ ●
	95						60,000 ◉ ●
	100						59,500 ◉ ●
105	58,200 ◉ ●						
110	58,000 ◉ ●						



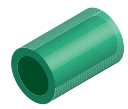
Hohlstäbe

Farben

○ naturfarben

● schwarz

mm	mm	Längen mm	Toleranzen außen mm		Toleranzen innen mm		PA 6 G
			min.	max.	min.	max.	kg/m
260	115	1.000	2	10	-2	-20	56,400 ○ ●
	120						56,100 ○ ●
	125						54,300 ○ ●
	130						53,900 ○ ●
	135						52,000 ○ ●
	140						51,600 ○ ●
	145						49,700 ○ ●
	150						49,100 ○ ●
	155						47,000 ○ ●
	160						46,300 ○ ●
	165						44,300 ○ ●
	170						43,400 ○ ●
	175						41,300 ○ ●
	180						40,300 ○ ●
	185						38,200 ○ ●
	190						37,000 ○ ●
	195						34,800 ○ ●
	200						33,600 ○ ●
	205						31,300 ○ ●
	210						29,900 ○ ●
	215						27,600 ○ ●
	220						26,000 ○ ●
	225						23,700 ○ ●
	230						22,000 ○ ●
	235						19,600 ○ ●
240	18,000 ○ ●						
245	15,400 ○ ●						
250	13,200 ○ ●						
270	50						70,900 ○
	55						70,500 ○
	60						70,100 ○
	65						69,500 ○
	70						69,000 ○
	75						68,400 ○
	80						67,700 ○
	90						66,300 ○ ●
	95						65,000 ○ ●
	100						64,600 ○ ●
	105						63,300 ○ ●
	110						63,200 ○ ●
	115						62,400 ○ ●
	120						62,000 ○ ●
	125						59,400 ○ ●
	130						59,100 ○ ●
	135						57,200 ○ ●
	140						56,700 ○ ●
	145						54,700 ○ ●
	150						54,200 ○ ●
155						52,100 ○ ●	
160						51,500 ○ ●	



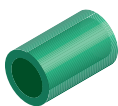
Hohlstäbe

Farben

○ naturfarben

● schwarz

mm	mm	Längen mm	Toleranzen außen mm		Toleranzen innen mm		PA 6 G
			min.	max.	min.	max.	kg/m
270	165	1.000	2	10	-2	-20	49,400 ○ ●
	170						48,500 ○ ●
	175						46,400 ○ ●
	180						45,400 ○ ●
	185						43,200 ○ ●
	190						42,200 ○ ●
	195						39,900 ○ ●
	200						39,000 ○ ●
	205						36,400 ○ ●
	210						35,000 ○ ●
	215						32,700 ○ ●
	220						31,200 ○ ●
	225						28,800 ○ ●
	230						27,100 ○ ●
	235						24,700 ○ ●
	240						23,000 ○ ●
	245						20,400 ○ ●
	250						19,000 ○ ●
	255						16,000 ○ ●
	260						13,700 ○ ●
280	50						76,200 ○
	55						75,700 ○
	60						75,400 ○
	65						74,900 ○
	70						74,300 ○
	75						73,700 ○
	80						73,000 ○
	90						71,600 ○ ●
	95						71,000 ○ ●
	100						70,000 ○ ●
	105						69,000 ○ ●
	110						68,500 ○ ●
	115						67,000 ○ ●
	120						66,500 ○ ●
	125						65,600 ○ ●
	130						64,400 ○ ●
	135						63,800 ○ ●
	140						62,000 ○ ●
	145						60,000 ○ ●
	150						59,500 ○ ●
155	57,400 ○ ●						
160	56,800 ○ ●						
165	54,600 ○ ●						
170	53,900 ○ ●						
175	51,600 ○ ●						
180	50,800 ○ ●						
185	48,500 ○ ●						
190	47,500 ○ ●						
195	45,100 ○ ●						
200	44,000 ○ ●						



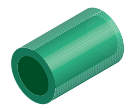
Hohlstäbe

Farben

○ naturfarben

● schwarz

mm	mm	Längen mm	Toleranzen außen mm		Toleranzen innen mm		PA 6 G	
			min.	max.	min.	max.	kg/m	
280	205	1.000	2	10	-2	-20	41,600 ○ ●	
	210						40,300 ○ ●	
	215						37,900 ○ ●	
	220						36,500 ○ ●	
	225						34,000 ○ ●	
	230						32,400 ○ ●	
	235						30,000 ○ ●	
	240						28,200 ○ ●	
	245						25,700 ○ ●	
	250						24,000 ○ ●	
	255						21,200 ○ ●	
	260						18,900 ○ ●	
	265						16,600 ○ ●	
	270						14,200 ○ ●	
	290						50	82,700 ○
							55	82,300 ○
60		81,900 ○						
65		81,400 ○						
70		80,800 ○						
75		80,200 ○						
80		79,600 ○						
90		78,200 ○						
95		75,600 ○ ●						
100		76,500 ○ ●						
105		75,500 ○ ●						
110		74,700 ○ ●						
115		73,500 ○ ●						
120		72,700 ○ ●						
125		71,600 ○ ●						
130		70,600 ○ ●						
135		69,000 ○ ●						
140		68,200 ○ ●						
145		67,500 ○ ●						
150		66,600 ○ ●						
155		64,500 ○ ●						
160		62,900 ○ ●						
165		61,500 ○ ●						
170		59,900 ○ ●						
175		58,500 ○ ●						
180		56,800 ○ ●						
185		53,900 ○ ●						
190		53,500 ○ ●						
195	50,500 ○ ●							
200	50,000 ○ ●							
205	47,000 ○ ●							
210	46,300 ○ ●							
215	43,300 ○ ●							
220	42,400 ○ ●							
225	39,400 ○ ●							
230	38,300 ○ ●							



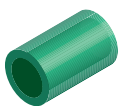
Hohlstäbe

Farben

○ naturfarben

● schwarz

mm	mm	Längen mm	Toleranzen außen mm		Toleranzen innen mm		PA 6 G						
			min.	max.	min.	max.	kg/m						
290	235	1.000	2	10	-2	-20	35,400 ○●						
	240						34,100 ○●						
	245						31,000 ○●						
	250						29,600 ○●						
	255						26,700 ○●						
	260						25,000 ○●						
	265						22,000 ○●						
	270						20,100 ○●						
	275						17,200 ○●						
	280						14,700 ○●						
	300						50	1.000 - 2.000					87,400 ○
55		87,000 ○											
60		86,600 ○											
65		86,100 ○											
70		85,500 ○											
75		84,900 ○											
80		84,200 ○											
90		82,800 ○											
100		81,200 ○●											
105		79,600 ○●											
110		79,100 ○●											
115		78,000 ○●											
120		77,700 ○●											
125		76,200 ○●											
130		75,600 ○●											
135		74,000 ○●											
140		73,200 ○●											
145		71,000 ○●											
150		70,700 ○●											
155		68,400 ○●											
160		68,000 ○●											
165		65,600 ○●											
170		65,100 ○●											
175		62,600 ○●											
180		62,000 ○●											
185		59,500 ○●											
190		58,700 ○●											
195		56,200 ○●											
200		55,200 ●											
			1.000										55,200 ○
		205											52,600 ○●
	210						51,500 ○●						
	215						48,900 ○●						
	220						48,000 ○●						
	225						45,000 ○●						
	230						44,000 ○●						
	235						41,000 ○●						
	240						39,400 ○●						
	245						36,700 ○●						
	250						35,000 ○●						



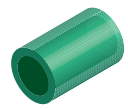
Hohlstäbe

Farben

○ naturfarben

● schwarz

mm	mm	Längen mm	Toleranzen außen mm		Toleranzen innen mm		PA 6 G
			min.	max.	min.	max.	kg/m
300	255	1.000	2	10	-2	-20	32,300 ○●
	260						30,400 ○●
	265						27,600 ○●
	270						26,000 ○●
	275						22,800 ○●
	280						21,000 ○●
	285						17,800 ○●
	290						15,200 ○●
	310						80
90		88,700 ○					
100		87,000 ○●					
105		86,500 ○●					
110		85,600 ○●					
115		85,000 ○●					
120		83,600 ○●					
125		83,000 ○●					
130		81,500 ○●					
135		80,900 ○●					
140		79,100 ○●					
145		78,500 ○●					
150		76,600 ○●					
155		75,900 ○●					
160		73,900 ○●					
165		73,200 ○●					
170		71,000 ○●					
175		70,200 ○●					
180		68,000 ○●					
185		67,100 ○●					
190		65,000 ○●					
195		63,800 ○●					
200		61,100 ○●					
205		60,300 ○●					
210		58,000 ○●					
215		56,700 ○●					
220		54,000 ○●					
225		52,800 ○●					
230		50,000 ○●					
235		48,800 ○●					
240		46,000 ○●					
245		44,500 ○●					
250		42,000 ○●					
255		40,100 ○●					
260		37,000 ○●					
265		35,500 ○●					
270	32,000 ○●						
275	30,800 ○●						
280	28,000 ○●						
285	25,800 ○●						
290	23,000 ○●						
295	20,700 ○●						



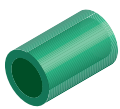
Hohlstäbe

Farben

○ naturfarben

● schwarz

mm	mm	Längen mm	Toleranzen außen mm		Toleranzen innen mm		PA 6 G
			min.	max.	min.	max.	kg/m
310	300	1.000	2	10	-2	-20	18,000 ○●
320	80						96,200 ○
	90						94,700 ○
	100						93,100 ○
	105						92,900 ○●
	110						91,700 ○●
	115						91,000 ○●
	120						89,700 ○●
	125						89,000 ○●
	130						87,500 ○●
	135						86,900 ○●
	140						85,200 ○●
	145						84,500 ○●
	150						82,600 ○●
	155						81,900 ○●
	160						79,900 ○●
	165						79,200 ○●
	170						77,000 ○●
	175						76,200 ○●
	180						75,000 ○●
	185						73,100 ○●
	190						71,000 ○●
	195						69,800 ○●
	200						68,000 ○●
	205						66,300 ○●
	210						64,000 ○●
	215						62,700 ○●
	220						60,000 ○●
	225						58,800 ○●
	230						57,000 ○●
	235						54,800 ○●
	240						53,000 ○●
	245						50,500 ○●
	250						48,000 ○●
	255						46,100 ○●
	260						44,000 ○●
	265						41,500 ○●
270	39,000 ○●						
275	36,800 ○●						
280	34,000 ○●						
285	31,800 ○●						
290	29,000 ○●						
295	26,700 ○●						
300	24,000 ○●						
305	21,300 ○●						
310	18,600 ○●						
330	80						102,400 ○
	90	101,000 ○					
	100	99,400 ○					
	110	97,900 ○					



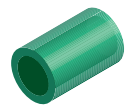
Hohlstäbe

Farben

○ naturfarben

● schwarz

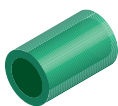
mm	mm	Längen mm	Toleranzen außen mm		Toleranzen innen mm		PA 6 G
			min.	max.	min.	max.	kg/m
330	120	1.000	2	10	-2	-20	95,900 ○
	130						93,800 ○
	140						91,400 ○
	150						88,900 ○
	160						86,200 ○
	170						83,300 ○
	180						80,200 ○
	190						76,900 ○
	200						73,400 ○
	210						69,700 ○
	220						65,900 ○
	230						61,800 ○
	240						57,600 ○
	250						53,200 ○
	260						48,600 ○
	270						43,800 ○
	280						38,800 ○
	290						33,700 ○
	300						28,300 ○
	340						80
90		107,400 ○					
100		105,800 ○					
110		104,400 ○					
120		102,400 ○					
130		100,200 ○					
140		97,900 ○					
150		95,300 ○					
160		92,600 ○					
170		89,700 ○					
180		86,600 ○					
190		83,300 ○					
200		79,800 ○					
210		76,200 ○					
220		72,300 ○					
230		68,300 ○					
240		64,100 ○					
250		59,700 ○					
260		55,000 ○					
270		50,300 ○					
280	45,300 ○						
290	40,100 ○						
300	34,800 ○						
310	29,200 ○						
350	80						115,500 ○
	90						114,100 ○
	100						112,400 ○
	110						111,000 ○
	115						110,200 ○ ●
	120						109,000 ○ ●
125	108,000 ○ ●						



Hohlstäbe

- Farben**
 ○ naturfarben
 ● schwarz

mm	mm	Längen mm	Toleranzen außen mm		Toleranzen innen mm		PA 6 G
			min.	max.	min.	max.	kg/m
350	130	1.000	2	10	-2	-20	106,900 ○●
	135						106,000 ○●
	140						104,500 ○●
	145						103,600 ○●
	150						102,000 ○●
	155						101,000 ○●
	160						99,300 ○●
	165						98,300 ○●
	170						96,300 ○●
	175						95,400 ○●
	180						93,200 ○●
	185						92,300 ○●
	190						90,000 ○●
	195						89,000 ○●
	200						86,500 ○●
	205						85,500 ○●
	210						83,000 ○●
	215						81,800 ○●
	220						80,000 ○●
	225						78,000 ○●
	230						74,900 ○●
	235						73,900 ○●
	240						71,000 ○●
	245						69,700 ○●
	250						67,000 ○●
	255						65,300 ○●
	260						63,000 ○●
	265						60,700 ○●
	270						58,000 ○●
	275						55,900 ○●
	280						53,000 ○●
	285						51,000 ○●
	290						48,000 ○●
	295						45,800 ○●
300	43,000 ○●						
305	40,500 ○●						
310	37,000 ○●						
315	35,000 ○●						
320	32,000 ○●						
325	29,300 ○●						
330	26,000 ○●						
335	23,400 ○●						
340	20,400 ○●						
360	80						122,300 ○
	90						121,500 ○
	100						119,300 ○
	110						117,800 ○
	120						115,800 ○
	130						113,700 ○
140						111,300 ○	



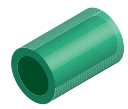
Hohlstäbe

Farben

○ naturfarben

● schwarz

mm	mm	Längen mm	Toleranzen außen mm		Toleranzen innen mm		PA 6 G
			min.	max.	min.	max.	kg/m
360	150	1.000	2	10	-2	-20	108,800 ○
	160						106,100 ○
	170						103,200 ○
	180						100,100 ○
	190						96,800 ○
	200						93,300 ○
	210						89,600 ○
	220						85,800 ○
	230						81,700 ○
	240						77,500 ○
	250						73,100 ○
	260						68,500 ○
	270						63,700 ○
	280						58,700 ○
	290						53,600 ○
	300						48,000 ○
	310						42,700 ○
	320						36,900 ○
	330						31,000 ○
	370						80
90		127,900 ○					
100		126,300 ○					
110		124,800 ○					
120		122,900 ○ ●					
125		121,900 ○ ●					
130		120,700 ○ ●					
135		119,700 ○ ●					
140		118,300 ○ ●					
145		117,300 ○ ●					
150		115,800 ○ ●					
155		114,800 ○ ●					
160		113,100 ○ ●					
165		112,000 ○ ●					
170		110,200 ○ ●					
175		109,000 ○ ●					
180		107,100 ○ ●					
185		106,000 ○ ●					
190		103,800 ○ ●					
195		102,700 ○ ●					
200		100,300 ○ ●					
205		99,200 ○ ●					
210		96,600 ○ ●					
215		95,500 ○ ●					
220		92,800 ○ ●					
225	91,700 ○ ●						
230	90,000 ○ ●						
235	87,600 ○ ●						
240	85,000 ○ ●						
245	83,400 ○ ●						
250	81,000 ○ ●						



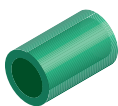
Hohlstäbe

Farben

○ naturfarben

● schwarz

mm	mm	Längen mm	Toleranzen außen mm		Toleranzen innen mm		PA 6 G
			min.	max.	min.	max.	kg/m
370	255	1.000	2	10	-2	-20	79,000 ○●
	260						76,000 ○●
	265						74,400 ○●
	270						72,000 ○●
	275						69,600 ○●
	280						67,000 ○●
	285						64,600 ○●
	290						62,000 ○●
	295						59,500 ○●
	300						57,000 ○●
	305						54,200 ○●
	310						51,000 ○●
	315						48,700 ○●
	320						46,000 ○●
	325						43,000 ○●
	330						40,000 ○●
	335						37,000 ○●
	340						35,000 ○●
	345						31,000 ○●
	350						28,000 ○●
355	24,800 ○●						
360	21,600 ○●						
380	80						136,500 ○
	90						135,100 ○
	100						133,500 ○
	110						132,000 ○
	120						130,000 ○
	130						127,900 ○
	140						125,500 ○
	150						123,000 ○
	160						120,300 ○
	170						117,400 ○
	180						114,300 ○
	190						111,000 ○
	200						107,500 ○
	210						103,800 ○
	220						100,000 ○
	230						95,900 ○
	240						91,700 ○
	250						87,300 ○
	260						82,700 ○
	270						77,900 ○
280	72,900 ○						
290	67,800 ○						
300	62,400 ○						
310	56,900 ○						
320	51,100 ○						
330	45,200 ○						
340	39,100 ○						
350	32,800 ○						



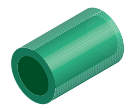
Hohlstäbe

Farben

○ naturfarben

● schwarz

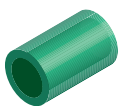
mm	mm	Längen mm	Toleranzen außen mm		Toleranzen innen mm		PA 6 G
			min.	max.	min.	max.	kg/m
390	80	1.000	2	10	-2	-20	146,700 ○
	90						145,400 ○
	100						144,000 ○
	110						142,400 ○
	120						140,600 ○
	130						138,500 ○
	140						136,300 ○
	150						134,000 ○
	160						131,400 ○
	170						128,600 ○
	180						125,600 ○
	190						122,500 ○
	200						119,200 ○
	210						115,600 ○
	220						111,900 ○
	230						108,000 ○
	240						103,900 ○
	250						99,600 ○
	260						95,100 ○
	270						90,500 ○
	280						85,600 ○
	290						80,600 ○
	300						75,300 ○
	310						69,900 ○
	320						64,300 ○
	330						58,500 ○
	340						52,500 ○
	350						46,300 ○
	360						40,000 ○
	400						80
90		150,000 ○					
100		148,400 ○					
110		147,000 ○					
120		145,000 ○					
130		142,800 ○ ●					
135		141,600 ○ ●					
140		140,500 ○ ●					
145		139,200 ○ ●					
150		138,000 ○ ●					
155		136,700 ○ ●					
160		135,200 ○ ●					
165		133,900 ○ ●					
170		132,300 ○ ●					
175		131,000 ○ ●					
180		129,200 ○ ●					
185		127,900 ○ ●					
190		125,900 ○ ●					
195		124,600 ○ ●					
200		122,500 ○ ●					
205	121,000 ○ ●						



Hohlstäbe

- Farben**
 ○ naturfarben
 ● schwarz

mm	mm	Längen mm	Toleranzen außen mm		Toleranzen innen mm		PA 6 G
			min.	max.	min.	max.	kg/m
400	210	1.000	2	10	-2	-20	118,800 ○●
	215						117,500 ○●
	220						114,900 ○●
	225						113,600 ○●
	230						110,900 ○●
	235						109,500 ○●
	240						106,700 ○●
	245						105,300 ○●
	250						102,300 ○●
	255						101,000 ○●
	260						99,000 ○●
	265						96,300 ○●
	270						94,000 ○●
	275						91,500 ○●
	280						89,000 ○●
	285						86,600 ○●
	290						84,000 ○●
	295						81,400 ○●
	300						78,000 ○●
	305						76,000 ○●
	310						74,000 ○●
	315						70,600 ○●
	320						68,000 ○●
	325						64,900 ○●
	330						62,000 ○●
	335						59,000 ○●
	340						56,000 ○●
	345						52,900 ○●
	350						50,000 ○●
	355						46,700 ○●
	360						43,000 ○●
	365						40,200 ○●
	370						38,000 ○●
375	33,600 ○●						
380	31,000 ○●						
385	26,800 ○●						
390	23,300 ○●						
410	80						159,000 ○
	90						157,700 ○
	100						156,300 ○
	110						154,700 ○
	120						152,700 ○
	130						150,670 ○
	140						148,500 ○
	150						146,100 ○
	160						143,300 ○
	170						140,500 ○
	180						137,500 ○
190						134,400 ○	
200						130,700 ○	



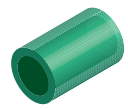
Hohlstäbe

Farben

○ naturfarben

● schwarz

mm	mm	Längen mm	Toleranzen außen mm		Toleranzen innen mm		PA 6 G
			min.	max.	min.	max.	kg/m
410	210	1.000	2	10	-2	-20	127,200 ○
	220						123,500 ○
	230						119,500 ○
	240						115,000 ○
	250						110,700 ○
	260						106,300 ○
	270						101,600 ○
	280						96,200 ○
	290						91,200 ○
	300						85,900 ○
	310						80,500 ○
	320						74,300 ○
	330						68,500 ○
	340						62,500 ○
	350						56,300 ○
	360						49,200 ○
	370						42,700 ○
	420						80
90		165,600 ○					
100		164,200 ○					
110		162,500 ○					
120		160,600 ○					
130		158,500 ○					
135		159,200 ○ ●					
140		156,300 ○ ●					
145		154,900 ○ ●					
150		154,000 ○ ●					
155		152,300 ○ ●					
160		151,100 ○ ●					
165		150,600 ○ ●					
170		148,400 ○ ●					
175		148,700 ○ ●					
180		145,400 ○ ●					
185		143,600 ○ ●					
190		142,300 ○ ●					
195		140,400 ○ ●					
200		138,600 ○ ●					
205		136,900 ○ ●					
210		135,000 ○ ●					
215		134,000 ○ ●					
220		131,300 ○ ●					
225		130,600 ○ ●					
230		128,000 ○ ●					
235		127,500 ○ ●					
240		123,000 ○ ●					
245		122,500 ○ ●					
250		119,000 ○ ●					
255	118,100 ○ ●						
260	114,100 ○ ●						
265	113,500 ○ ●						

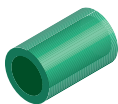


Hohlstäbe

Farben

- naturfarben
- schwarz

mm	mm	Längen mm	Toleranzen außen mm		Toleranzen innen mm		PA 6 G
			min.	max.	min.	max.	kg/m
420	270	1.000	2	10	-2	-20	110,000 ○●
	275						109,600 ○●
	280						107,000 ○●
	285						104,700 ○●
	290						101,000 ○●
	295						99,600 ○●
	300						96,000 ○●
	305						94,300 ○●
	310						91,000 ○●
	315						88,800 ○●
	320						85,000 ○●
	325						83,100 ○●
	330						80,000 ○●
	335						77,300 ○●
	340						74,000 ○●
	345						71,300 ○●
	350						68,000 ○●
	355						65,000 ○●
	360						61,000 ○●
	365						58,700 ○●
370	55,000 ○●						
375	52,000 ○●						
380	48,000 ○●						
430	80						174,900 ○
	90						173,700 ○
	100						172,200 ○
	110						170,600 ○
	120						168,600 ○
	130						166,600 ○
	140						164,400 ○
	150						162,000 ○
	160						159,200 ○
	170						156,400 ○
	180						153,500 ○
	190						150,300 ○
	200						146,600 ○
	210						143,100 ○
	220						139,400 ○
	230						135,500 ○
	240						131,000 ○
	250						126,700 ○
	260						122,200 ○
	270						117,500 ○
280	112,200 ○						
290	107,100 ○						
300	101,900 ○						
310	96,400 ○						
320	90,200 ○						
330	84,400 ○						
340	78,400 ○						



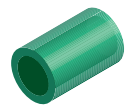
Hohlstäbe

Farben

○ naturfarben

● schwarz

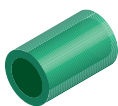
mm	mm	Längen mm	Toleranzen außen mm		Toleranzen innen mm		PA 6 G
			min.	max.	min.	max.	kg/m
430	350	1.000	2	10	-2	-20	72,200 ○
	360						65,200 ○
	370						58,600 ○
	380						51,800 ○
	390						44,800 ○
440	80						183,100 ○
	90						181,900 ○
	100						180,500 ○
	110						178,800 ○
	120						176,900 ○
	130						174,800 ○
	140						172,600 ○
	150						170,300 ○
	160						167,400 ○
	170						164,700 ○
	180						161,700 ○
	190						158,600 ○
	200						154,900 ○
	210						151,300 ○
	220						147,600 ○
	230						143,700 ○
	240						139,200 ○
	250						134,900 ○
	260						130,400 ○
	270						125,800 ○
	280						120,400 ○
	290						115,300 ○
	300						110,100 ○
	310						104,700 ○
320						98,500 ○	
330						92,600 ○	
340						86,600 ○	
350						80,400 ○	
360						73,400 ○	
370						66,800 ○	
380						60,000 ○	
390						53,100 ○	
450	80						191,600 ○
	90						190,300 ○
	100						188,900 ○
	110						187,300 ○
	120						185,300 ○
	130						183,300 ○
	140						181,100 ○
	145						181,600 ○ ●
	150						178,700 ○ ●
	155						179,100 ○ ●
160						175,900 ○ ●	
165						174,800 ○ ●	
170						173,100 ○ ●	



Hohlstäbe

- Farben**
 ○ naturfarben
 ● schwarz

mm	mm	Längen mm	Toleranzen außen mm		Toleranzen innen mm		PA 6 G
			min.	max.	min.	max.	kg/m
450	175	1.000	2	10	-2	-20	172,500 ○●
180	170,100 ○●						
185	168,500 ○●						
190	167,000 ○●						
195	165,200 ○●						
200	163,300 ○●						
205	161,700 ○●						
210	159,800 ○●						
215	159,000 ○●						
220	156,100 ○●						
225	155,300 ○●						
230	152,100 ○●						
235	151,400 ○●						
240	147,600 ○●						
245	174,000 ○●						
250	143,300 ○●						
255	142,600 ○●						
260	139,000 ○●						
265	137,200 ○●						
270	134,200 ○●						
275	133,700 ○●						
280	130,000 ○●						
285	129,500 ○●						
290	124,000 ○●						
295	122,800 ○●						
300	119,000 ○●						
305	117,000 ○●						
310	116,000 ○●						
315	113,600 ○●						
320	110,000 ○●						
325	107,900 ○●						
330	104,000 ○●						
335	102,000 ○●						
340	98,000 ○●						
345	96,000 ○●						
350	92,000 ○●						
355	89,800 ○●						
360	87,000 ○●						
365	83,400 ○●						
370	80,000 ○●						
375	76,900 ○●						
380	73,000 ○●						
385	70,000 ○●						
390	66,000 ○●						
395	63,100 ○●						
400	59,000 ○●						
405	56,000 ○●						
410	52,000 ○●						
415	48,700 ○●						
420	45,000 ○●						



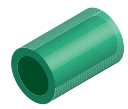
Hohlstäbe

Farben

○ naturfarben

● schwarz

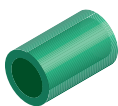
mm	mm	Längen mm	Toleranzen außen mm		Toleranzen innen mm		PA 6 G
			min.	max.	min.	max.	kg/m
450	425	1.000	2	10	-2	-20	41,200 ○ ●
	430						38,000 ○ ●
	435						33,500 ○ ●
	440						29,600 ○ ●
460	80						200,200 ○
	90						198,900 ○
	100						197,500 ○
	110						195,900 ○
	120						193,900 ○
	130						191,900 ○
	140						189,700 ○
	150						187,300 ○
	160						184,500 ○
	170						181,700 ○
	180						178,700 ○
	190						175,600 ○
	200						171,900 ○
	210						168,400 ○
	220						164,700 ○
	230						160,800 ○
	240						156,200 ○
	250						151,900 ○
	260						147,500 ○
	270						142,800 ○
	280						137,400 ○
	290						132,400 ○
	300						127,100 ○
	310						121,700 ○
	320						115,500 ○
	330						109,700 ○
	340						103,700 ○
	350						97,500 ○
	360						90,500 ○
	370						83,900 ○
	380						77,100 ○
	390						70,100 ○
400						62,300 ○	
410						60,800 ○	
420						47,400 ○	
470	80						209,000 ○
	90						207,700 ○
	100						206,300 ○
	110						204,700 ○
	120						202,700 ○
	130						200,700 ○
	140						198,500 ○
	150						196,100 ○
160						193,300 ○	
170						190,500 ○	
180						187,500 ○	



Hohlstäbe

- Farben**
 ○ naturfarben
 ● schwarz

mm	mm	Längen mm	Toleranzen außen mm		Toleranzen innen mm		PA 6 G
			min.	max.	min.	max.	kg/m
470	190	1.000	2	10	-2	-20	184,400 ○
	200						171,600 ○
	210						177,200 ○
	220						173,500 ○
	230						169,600 ○
	240						165,000 ○
	250						160,800 ○
	260						156,300 ○
	270						151,600 ○
	280						146,200 ○
	290						141,200 ○
	300						135,900 ○
	310						130,500 ○
	320						124,300 ○
	330						118,500 ○
	340						112,500 ○
	350						106,300 ○
	360						99,300 ○
	370						92,700 ○
	380						85,900 ○
390	78,900 ○						
400	71,100 ○						
410	69,600 ○						
420	56,200 ○						
430	54,700 ○						
475	155	1.000	2	10	-2	-20	201,000 ○●
	160						196,000 ○●
	165						195,000 ○●
	170						193,000 ○●
	175						192,500 ○●
	180						190,000 ○●
	185						191,400 ○●
	190						187,000 ○●
	195						186,000 ○●
	200						184,000 ○●
	205						183,000 ○●
	210						180,000 ○●
	215						178,000 ○●
	220						176,000 ○●
	225						174,500 ○●
230	172,000 ○●						
235	171,400 ○●						
240	168,000 ○●						
245	166,800 ○●						
250	164,000 ○●						
255	162,500 ○●						
260	159,000 ○●						
265	157,000 ○●						
270	154,000 ○●						
275	153,000 ○●						



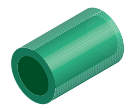
Hohlstäbe

Farben

○ naturfarben

● schwarz

mm	mm	Längen mm	Toleranzen außen mm		Toleranzen innen mm		PA 6 G
			min.	max.	min.	max.	kg/m
475	280	1.000	2	10	-2	-20	152,000 ○ ●
	285						151,400 ○ ●
	290						147,000 ○ ●
	295						146,250 ○ ●
	300						141,000 ○ ●
	305						138,000 ○ ●
	310						136,000 ○ ●
	315						135,500 ○ ●
	320						130,000 ○ ●
	325						129,850 ○ ●
	330						126,000 ○ ●
	335						124,000 ○ ●
	340						120,000 ○ ●
	345						118,000 ○ ●
	350						114,000 ○ ●
	355						111,800 ○ ●
	360						108,000 ○ ●
	365						105,400 ○ ●
	370						101,000 ○ ●
	375						98,800 ○ ●
	380						96,000 ○ ●
	385						92,000 ○ ●
	390						89,000 ○ ●
	395						85,000 ○ ●
	400						81,000 ○ ●
	405						77,900 ○ ●
	410						74,000 ○ ●
	415						70,600 ○ ●
	420						67,000 ○ ●
	425						63,000 ○ ●
	430						59,000 ○ ●
	435						55,400 ○ ●
	440						52,000 ○ ●
445	47,500 ○ ●						
450	44,000 ○ ●						
455	39,500 ○ ●						
460	36,000 ○ ●						
465	31,200 ○ ●						
480	120						211,900 ○
	130						209,900 ○
	140						207,700 ○
	150						205,300 ○
	160						202,500 ○
	170						199,800 ○
	180						196,800 ○
	190						193,700 ○
	200						190,100 ○
	210						186,500 ○
220						182,800 ○	
230						178,900 ○	

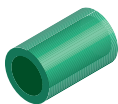


Hohlstäbe

Farben

- ◉ naturfarben
- schwarz

mm	mm	Längen mm	Toleranzen außen mm		Toleranzen innen mm		PA 6 G
			min.	max.	min.	max.	kg/m
480	240	1.000	2	10	-2	-20	174,500 ◉
	250						170,200 ◉
	260						165,700 ◉
	270						161,100 ◉
	280						155,700 ◉
	290						150,700 ◉
	300						145,500 ◉
	310						140,000 ◉
	320						133,900 ◉
	330						128,100 ◉
	340						122,100 ◉
	350						115,900 ◉
	360						108,900 ◉
	370						102,300 ◉
	380						95,600 ◉
	390						88,600 ◉
	400						80,800 ◉
	410						78,600 ◉
	420						65,920 ◉
	430						63,600 ◉
440	50,300 ◉						
490	120						221,000 ◉
	130						219,100 ◉
	140						216,900 ◉
	150						214,500 ◉
	160						211,700 ◉
	170						208,900 ◉
	180						206,000 ◉
	190						202,900 ◉
	200						199,200 ◉
	210						195,700 ◉
	220						192,000 ◉
	230						188,100 ◉
	240						183,600 ◉
	250						179,300 ◉
	260						174,900 ◉
	270						170,200 ◉
	280						164,900 ◉
	290						159,900 ◉
	300						154,600 ◉
	310						149,200 ◉
320	143,000 ◉						
330	137,200 ◉						
340	131,200 ◉						
350	125,100 ◉						
360	118,100 ◉						
370	111,500 ◉						
380	104,700 ◉						
390	97,800 ◉						
400	89,900 ◉						



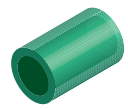
Hohlstäbe

Farben

○ naturfarben

● schwarz

mm	mm	Längen mm	Toleranzen außen mm		Toleranzen innen mm		PA 6 G
			min.	max.	min.	max.	kg/m
490	410	1.000	2	10	-2	-20	87,800 ○
	420						75,100 ○
	430						72,800 ○
	440						59,500 ○
	450						57,100 ○
500	100						232,800 ○
	110						232,200 ○
	120						230,400 ○
	130						228,400 ○
	140						226,000 ○
	150						223,600 ○
	160						222,800 ○ ●
	165						221,400 ○ ●
	170						218,300 ○ ●
	175						217,000 ○ ●
	180						215,100 ○ ●
	185						213,400 ○ ●
	190						211,900 ○ ●
	195						210,200 ○ ●
	200						208,600 ○ ●
	205						206,700 ○ ●
	210						205,100 ○ ●
	215						203,000 ○ ●
	220						201,000 ○ ●
	225						198,900 ○ ●
	230						197,100 ○ ●
	235						196,300 ○ ●
	240						193,000 ○ ●
	245						192,000 ○ ●
	250						188,700 ○ ●
	255						185,500 ○ ●
	260						183,800 ○ ●
	265						182,500 ○ ●
	270						179,100 ○ ●
	275						177,500 ○ ●
	280						174,300 ○ ●
	285						172,500 ○ ●
	290						169,200 ○ ●
	295						167,700 ○ ●
	300						163,500 ○ ●
305						162,000 ○ ●	
310						160,000 ○ ●	
315						158,600 ○ ●	
320						154,000 ○ ●	
325						152,900 ○ ●	
330						149,000 ○ ●	
335						147,000 ○ ●	
340						143,000 ○ ●	
345						141,000 ○ ●	
350						136,000 ○ ●	



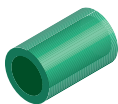
Hohlstäbe

Farben

○ naturfarben

● schwarz

mm	mm	Längen mm	Toleranzen außen mm		Toleranzen innen mm		PA 6 G
			min.	max.	min.	max.	kg/m
500	355	1.000	2	10	-2	-20	134,800 ○ ●
	360						133,000 ○ ●
	365						128,400 ○ ●
	370						126,000 ○ ●
	375						121,900 ○ ●
	380						119,000 ○ ●
	385						115,000 ○ ●
	390						112,000 ○ ●
	395						108,000 ○ ●
	400						105,000 ○ ●
	405						101,000 ○ ●
	410						99,000 ○ ●
	415						93,700 ○ ●
	420						92,000 ○ ●
	425						86,200 ○ ●
	430						84,000 ○ ●
	435						78,500 ○ ●
	440						76,000 ○ ●
	445						70,600 ○ ●
	450						68,000 ○ ●
455	62,500 ○ ●						
460	60,000 ○ ●						
465	54,300 ○ ●						
470	53,000 ○ ●						
475	45,900 ○ ●						
480	44,000 ○ ●						
510	100						243,400 ○
	110						241,800 ○
	120						239,900 ○
	130						238,000 ○
	140						235,600 ○
	150						233,200 ○
	160						230,600 ○
	170						227,900 ○
	180						224,600 ○
	190						221,500 ○
	200						218,100 ○
	210						214,600 ○
	220						210,500 ○
	230						206,600 ○
	240						202,500 ○
	250						198,300 ○
	260						193,300 ○
	270						188,700 ○
	280						183,800 ○
	290						178,800 ○
300	173,000 ○						
310	167,600 ○						
320	161,900 ○						
330	156,100 ○						



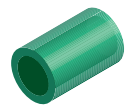
Hohlstäbe

Farben

○ naturfarben

● schwarz

mm	mm	Längen mm	Toleranzen außen mm		Toleranzen innen mm		PA 6 G	
			min.	max.	min.	max.	kg/m	
510	340	1.000	2	10	-2	-20	149,500 ○	
	350						143,300 ○	
	360						137,000 ○	
	370						130,400 ○	
	380						123,000 ○	
	390						116,000 ○	
	400	1.000 - 2.000					108,900 ○	
	410	1.000					106,700 ○	
	420						94,000 ○	
	430						91,700 ○	
	440						77,600 ○	
	450						76,000 ○	
	460						61,200 ○	
	470						52,800 ○	
	520						100	
110			261,000 ○					
120		260,000 ○						
130		257,000 ○						
140		255,500 ○						
150		253,000 ○						
160		250,600 ○						
170		248,000 ○						
180		245,000 ○						
190		242,000 ○						
200		238,500 ○						
210		235,000 ○						
220		231,000 ○						
230		227,500 ○						
240		223,500 ○						
250		219,000 ○						
260		215,000 ○						
270		210,000 ○						
280		205,500 ○						
290		200,500 ○						
300		195,300 ○						
310		190,000 ○						
320		184,500 ○						
330		179,000 ○						
340		173,000 ○						
350		166,800 ○						
360		160,500 ○						
370	154,000 ○							
380	147,400 ○							
390	140,500 ○							
400	133,500 ○							
410	126,000 ○							
420	119,000 ○							
430	111,000 ○							
440	103,000 ○							
450	95,700 ○							



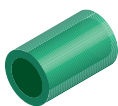
Hohlstäbe

Farben

○ naturfarben

● schwarz

mm	mm	Längen mm	Toleranzen außen mm		Toleranzen innen mm		PA 6 G
			min.	max.	min.	max.	kg/m
520	460	1.000	2	20	-2	-20	87,500 ○
	470						79,200 ○
	480						70,700 ○
525	170						246,800 ○ ●
	180						243,800 ○ ●
	190						240,700 ○ ●
	200						237,400 ○ ●
	210						233,900 ○ ●
	220						230,200 ○ ●
	230						226,300 ○ ●
	240						222,200 ○ ●
	250						218,000 ○ ●
	260						213,600 ○ ●
	270						209,000 ○ ●
	280						204,200 ○ ●
	290						199,200 ○ ●
	300						194,000 ○ ●
	310						188,700 ○ ●
	320						183,200 ○ ●
	330						177,400 ○ ●
	340						171,500 ○ ●
	350						167,800 ○ ●
	360						159,200 ○ ●
	370						152,700 ○ ●
	380						146,000 ○ ●
	390						139,200 ○ ●
	400						132,200 ○ ●
	410						125,000 ○ ●
	420						117,700 ○ ●
	430						110,100 ○ ●
	440						102,400 ○ ●
450						94,400 ○ ●	
460						86,300 ○ ●	
470						78,000 ○ ●	
480						69,500 ○ ●	
490						60,900 ○ ●	
500						52,000 ○ ●	
510						43,000 ○ ●	
530	100						273,000 ○
	110						271,000 ○
	120						270,000 ○
	130						267,000 ○
	140						265,500 ○
	150						263,000 ○
	160						260,000 ○
	170						258,000 ○
	180						255,000 ○
	190						252,000 ○
200						249,000 ○	
210						245,000 ○	



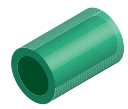
Hohlstäbe

Farben

○ naturfarben

● schwarz

mm	mm	Längen mm	Toleranzen außen mm		Toleranzen innen mm		PA 6 G
			min.	max.	min.	max.	kg/m
530	220	1.000	2	20	-2	-20	241,000 ○
	230						237,600 ○
	240						233,600 ○
	250						229,000 ○
	260						225,000 ○
	270						220,000 ○
	280						215,500 ○
	290						210,000 ○
	300						205,000 ○
	310						200,000 ○
	320						194,500 ○
	330						189,000 ○
	340						183,000 ○
	350						177,000 ○
	360						170,500 ○
	370						164,000 ○
	380						157,000 ○
	390						151,000 ○
	400						144,000 ○
	410						136,000 ○
420	129,000 ○						
430	121,000 ○						
440	114,000 ○						
450	106,000 ○						
460	98,000 ○						
470	89,000 ○						
480	81,000 ○						
490	72,000 ○						
540	100						283,000 ○
	110						282,000 ○
	120						280,000 ○
	130						278,000 ○
	140						276,000 ○
	150						273,500 ○
	160						271,000 ○
	170						268,000 ○
	180						265,000 ○
	190						262,000 ○
	200						259,000 ○
	210						255,000 ○
	220						251,000 ○
230						248,000 ○	
240						244,000 ○	
250						239,600 ○	
260						235,000 ○	
270						230,500 ○	
280						226,000 ○	
290						221,000 ○	
300						215,700 ○	
310						210,000 ○	

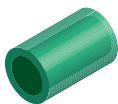


Hohlstäbe

Farben

- ◉ naturfarben
- schwarz

mm	mm	Längen mm	Toleranzen außen mm		Toleranzen innen mm		PA 6 G
			min.	max.	min.	max.	kg/m
540	320	1.000	2	20	-2	-20	205,000 ◉
	330						199,000 ◉
	340						193,000 ◉
	350						187,000 ◉
	360						181,000 ◉
	370						174,400 ◉
	380						167,800 ◉
	390						161,000 ◉
	400						154,000 ◉
	410						146,800 ◉
	420						139,400 ◉
	430						131,800 ◉
	440						124,000 ◉
	450						116,000 ◉
	460						108,000 ◉
	470						99,600 ◉
	480						91,000 ◉
490	82,500 ◉						
500	73,600 ◉						
550	100						294,000 ◉
	110						292,300 ◉
	120						290,500 ◉
	130						288,500 ◉
	140						286,300 ◉
	150						284,000 ◉
	160						281,400 ◉
	170						278,700 ◉
	180						275,800 ◉ ●
	190						272,700 ◉ ●
	200						269,400 ◉ ●
	210						265,900 ◉ ●
	220						262,200 ◉ ●
	230						258,400 ◉ ●
	240						254,300 ◉ ●
	250						250,000 ◉ ●
	260						245,700 ◉ ●
	270						241,000 ◉ ●
	280						236,300 ◉ ●
	290						231,400 ◉ ●
	300						226,200 ◉ ●
310	221,000 ◉ ●						
320	215,300 ◉ ●						
330	209,600 ◉ ●						
340	203,700 ◉ ●						
350	197,600 ◉ ●						
360	191,400 ◉ ●						
370	184,900 ◉ ●						
380	178,300 ◉ ●						
390	171,400 ◉ ●						
400	164,400 ◉ ●						



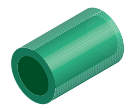
Hohlstäbe

Farben

○ naturfarben

● schwarz

mm	mm	Längen mm	Toleranzen außen mm		Toleranzen innen mm		PA 6 G
			min.	max.	min.	max.	kg/m
550	410	1.000	2	20	-2	-20	157,200 ○●
	420						149,900 ○●
	430						142,300 ○●
	440						134,500 ○●
	450						126,500 ○●
	460						118,400 ○●
	470						110,000 ○●
	480						101,600 ○●
	490						92,900 ○●
	500						84,000 ○●
	510						68,400 ○●
	520						59,200 ○●
	530						49,800 ○●
	560						100
110		303,000 ○					
120		301,000 ○					
130		299,000 ○					
140		297,000 ○					
150		295,000 ○					
160		292,000 ○					
170		289,000 ○					
180		286,400 ○					
190		283,300 ○					
200		280,000 ○					
210		276,500 ○					
220		273,000 ○					
230		267,000 ○					
240		265,000 ○					
250		260,800 ○					
260		256,300 ○					
270		251,800 ○					
280		247,000 ○					
290		241,000 ○					
300		237,000 ○					
310		231,500 ○					
320		226,000 ○					
330		220,300 ○					
340		214,400 ○					
350		208,000 ○					
360		202,000 ○					
370		195,500 ○					
380		189,000 ○					
390		182,000 ○					
400		175,000 ○					
410		167,900 ○					
420	160,500 ○						
430	153,000 ○						
440	145,000 ○						
450	137,000 ○						
460	129,000 ○						



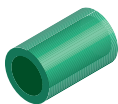
Hohlstäbe

Farben

○ naturfarben

● schwarz

mm	mm	Längen mm	Toleranzen außen mm		Toleranzen innen mm		PA 6 G
			min.	max.	min.	max.	kg/m
560	470	1.000	2	20	-2	-20	121,000 ○
	480						112,000 ○
	490						103,500 ○
	500						94,700 ○
	510						85,600 ○
570	110						313,800 ○
	120						312,000 ○
	130						310,000 ○
	140						307,800 ○
	150						305,500 ○
	160						303,000 ○
	170						300,000 ○
	180						297,300 ○
	190						294,000 ○
	200						291,000 ○
	210						287,400 ○
	220						283,700 ○
	230						280,000 ○
	240						275,800 ○
	250						271,600 ○
	260						267,200 ○
	270						262,600 ○
	280						257,800 ○
	290						252,900 ○
	300						247,700 ○
	310	242,400 ○					
	320	236,800 ○					
	330	231,100 ○					
	340	225,200 ○					
	350	219,200 ○					
	360	212,900 ○					
	370	206,400 ○					
	380	199,800 ○					
	390	193,000 ○					
	400	185,900 ○					
	410	178,700 ○					
	420	171,000 ○					
430	163,800 ○						
440	156,000 ○						
450	148,000 ○						
460	140,000 ○						
470	131,600 ○						
480	123,000 ○						
490	114,400 ○						
500	105,500 ○						
510	96,500 ○						
520	87,200 ○						
575	190	292,800 ○ ●					
	200	289,500 ○ ●					
	210	286,000 ○ ●					



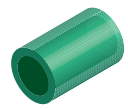
Hohlstäbe

Farben

○ naturfarben

● schwarz

mm	mm	Längen mm	Toleranzen außen mm		Toleranzen innen mm		PA 6 G
			min.	max.	min.	max.	kg/m
575	220	1.000	2	20	-2	-20	282,300 ○ ●
	230						278,400 ●
	240						274,300 ○ ●
	250						270,100 ○ ●
	260						265,700 ○ ●
	270						261,000 ○ ●
	280						256,300 ○ ●
	290						251,300 ○ ●
	300						246,100 ○ ●
	310						240,800 ○ ●
	320						235,200 ○ ●
	330						229,500 ○ ●
	340						223,600 ○ ●
	350						217,500 ○ ●
	360						211,300 ○ ●
	370						204,800 ○ ●
	380						203,500 ○ ●
	390						191,300 ○ ●
	400						184,300 ○ ●
	410						177,100 ○ ●
	420						169,800 ○ ●
	430						162,200 ○ ●
	440						154,500 ○ ●
	450						146,500 ○ ●
	460						138,400 ○ ●
	470						130,100 ○ ●
	480						121,600 ○ ●
	490						113,000 ○ ●
	500						104,100 ○ ●
	510						95,000 ○ ●
	520						85,800 ○ ●
	530						76,500 ○ ●
540	66,800 ○ ●						
550	57,000 ○ ●						
560	47,100 ○ ●						
580	110						325,000 ○
	120						323,000 ○
	130						321,000 ○
	140						319,000 ○
	150						316,500 ○
	160						314,000 ○
	170						311,000 ○
	180						308,000 ○
	190						305,000 ○
	200						302,000 ○
210						298,000 ○	
220						294,800 ○	
230						291,000 ○	
240						287,000 ○	
250						282,600 ○	



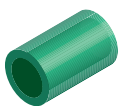
Hohlstäbe

Farben

○ naturfarben

● schwarz

mm	mm	Längen mm	Toleranzen außen mm		Toleranzen innen mm		PA 6 G
			min.	max.	min.	max.	kg/m
580	260	1.000	2	20	-2	-20	278,200 ○
	270						273,600 ○
	280						269,000 ○
	290						264,000 ○
	300						258,700 ○
	310						253,400 ○
	320						248,000 ○
	330						242,000 ○
	340						236,000 ○
	350						230,000 ○
	360						224,000 ○
	370						217,500 ○
	380						210,800 ○
	390						204,000 ○
	400						197,000 ○
	410						190,000 ○
	420						182,000 ○
	430						175,000 ○
	440						167,000 ○
	450						159,000 ○
	460						151,000 ○
	470						142,700 ○
	480						134,000 ○
	490						125,500 ○
500	116,500 ○						
510	107,500 ○						
520	98,000 ○						
530	89,000 ○						
540	79,000 ○						
590	100						337,700 ○
	110						336,000 ○
	120						334,300 ○
	130						332,300 ○
	140						330,000 ○
	150						328,000 ○
	160						325,200 ○
	170						322,400 ○
	180						319,500 ○
	190						316,400 ○
	200						313,000 ○
	210						309,600 ○
	220						306,000 ○
	230						302,000 ○
	240						298,000 ○
	250						294,000 ○
260	289,500 ○						
270	285,000 ○						
280	280,000 ○						
290	275,000 ○						
300	270,000 ○						



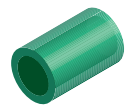
Hohlstäbe

Farben

○ naturfarben

● schwarz

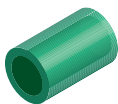
mm	mm	Längen mm	Toleranzen außen mm		Toleranzen innen mm		PA 6 G
			min.	max.	min.	max.	kg/m
590	310	1.000	2	20	-2	-20	264,500 ○
	320						259,000 ○
	330						253,000 ○
	340						247,500 ○
	360						235,000 ○
	370						228,500 ○
	380						222,000 ○
	390						215,000 ○
	400						208,000 ○
	410						201,000 ○
	420						193,500 ○
	430						186,000 ○
	440						178,000 ○
	450						170,000 ○
	460						162,000 ○
	470						154,000 ○
	480						145,500 ○
	490						136,500 ○
	500						128,000 ○
	510						118,800 ○
520	109,500 ○						
530	100,000 ○						
540	90,500 ○						
600	110						347,500 ○
	120						345,500 ○
	130						343,500 ○
	140						341,500 ○
	150						339,000 ○
	160						336,500 ○
	170						333,800 ○
	180						331,000 ○
	190						327,800 ○
	200						324,500 ○ ●
	210						321,000 ○ ●
	220						317,400 ○ ●
	230						313,500 ○ ●
	240						309,500 ○ ●
	250						305,000 ○ ●
	260						303,000 ○ ●
	270						298,500 ○ ●
	280						291,500 ○ ●
	290						286,500 ○ ●
	300						281,000 ○ ●
310	276,000 ○ ●						
320	270,500 ○ ●						
330	265,000 ○ ●						
340	259,000 ○ ●						
350	252,800 ○ ●						
360	246,500 ○ ●						
370	240,000 ○ ●						



Hohlstäbe

- Farben**
 ○ naturfarben
 ● schwarz

mm	mm	Längen mm	Toleranzen außen mm		Toleranzen innen mm		PA 6 G
			min.	max.	min.	max.	kg/m
600	380	1.000	2	20	-2	-20	233,400 ○●
	390						226,500 ○●
	400						219,500 ○●
	410						212,000 ○●
	420						205,000 ○●
	430						197,400 ○●
	440						189,700 ○●
	450						181,700 ○●
	460						173,600 ○●
	470						165,200 ○●
	480						156,700 ○●
	490						148,000 ○●
	500						139,200 ○●
	510						130,000 ○●
	520						121,000 ○●
	530						111,500 ○●
	540						102,000 ○●
	550						92,000 ○●
	560						74,900 ○●
	570						64,800 ○●
580	54,400 ○●						
625	200						346,200 ○●
	210						342,700 ○●
	220						339,000 ○●
	230						335,100 ○●
	240						331,000 ○●
	250						326,800 ○●
	260						322,400 ○●
	270						317,800 ○●
	280						313,000 ○●
	290						308,000 ○●
	300						302,800 ○●
	310						297,500 ○●
	320						292,000 ○●
	330						286,200 ○●
	340						280,300 ○●
	350						274,300 ○●
	360						268,000 ○●
	370						261,500 ○●
	380						254,900 ○●
	390						248,000 ○●
400	241,000 ○●						
410	233,900 ○●						
420	226,500 ○●						
430	218,900 ○●						
440	211,200 ○●						
450	203,200 ○●						
460	195,100 ○●						
470	186,800 ○●						
480	178,300 ○●						



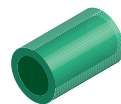
Hohlstäbe

Farben

○ naturfarben

● schwarz

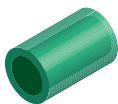
mm	mm	Längen mm	Toleranzen außen mm		Toleranzen innen mm		PA 6 G
			min.	max.	min.	max.	kg/m
625	490	1.000	2	20	-2	-20	169,700 ○ ●
	500						160,800 ○ ●
	510						151,800 ○ ●
	520						142,600 ○ ●
	530						133,200 ○ ●
	540						123,600 ○ ●
	550						113,800 ○ ●
	560						103,800 ○ ●
	570						93,700 ○ ●
	580						83,400 ○ ●
	590						72,800 ○ ●
	600						62,100 ○ ●
	610						51,300 ○ ●
	650						210
220		369,000 ○ ●					
230		365,200 ○ ●					
240		361,200 ○ ●					
250		356,900 ○ ●					
260		352,500 ○ ●					
270		347,400 ○ ●					
280		343,000 ○ ●					
290		338,000 ○ ●					
300		332,900 ○ ●					
310		327,600 ○ ●					
320		322,000 ○ ●					
330		316,300 ○ ●					
340		310,400 ○ ●					
350		304,300 ○ ●					
360		298,000 ○ ●					
370		291,600 ○ ●					
380		285,000 ○ ●					
390		278,200 ○ ●					
400		271,100 ○ ●					
410		264,000 ○ ●					
420		256,600 ○ ●					
430		249,000 ○ ●					
440		241,300 ○ ●					
450		233,300 ○ ●					
460		225,200 ○ ●					
470		216,900 ○ ●					
480		208,400 ○ ●					
490		199,800 ○ ●					
500		197,000 ○ ●					
510		181,900 ○ ●					
520		172,700 ○ ●					
530		163,200 ○ ●					
540		153,600 ○ ●					
550	143,900 ○ ●						
560	133,900 ○ ●						
570	123,800 ○ ●						



Hohlstäbe

- Farben**
 ○ naturfarben
 ● schwarz

mm	mm	Längen mm	Toleranzen außen mm		Toleranzen innen mm		PA 6 G
			min.	max.	min.	max.	kg/m
650	580	1.000	2	20	-2	-20	113,400 ○●
	590						102,900 ○●
	600						92,200 ○●
	610						81,400 ○●
	620						70,300 ○●
	630						59,000 ○●
675	220	1.000	2	20	-2	-20	400,300 ○●
	230						396,500 ○●
	240						392,400 ○●
	250						388,200 ○●
	260						383,700 ○●
	270						379,100 ○●
	280						374,300 ○●
	290						369,300 ○●
	300						364,200 ○●
	310						358,800 ○●
	320						353,300 ○●
	330						347,600 ○●
	340						341,700 ○●
	350						335,600 ○●
	360						329,300 ○●
	370						322,900 ○●
	380						316,200 ○●
	390						309,400 ○●
	400						302,400 ○●
	410						295,200 ○●
	420						287,800 ○●
	430						280,200 ○●
	440						272,500 ○●
	450						264,600 ○●
	460						256,500 ○●
	470						248,100 ○●
	475						245,400 ○
	480						239,700 ○●
	490						231,000 ○●
	500						222,100 ○●
	510						213,100 ○●
	520						203,900 ○●
530	194,500 ○●						
540	184,900 ○●						
550	175,100 ○●						
560	165,200 ○●						
570	155,000 ○●						
580	144,700 ○●						
590	134,200 ○●						
600	123,500 ○●						
610	112,600 ○●						
620	101,500 ○●						
630	90,300 ○●						
640	78,800 ○●						



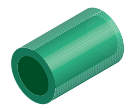
Hohlstäbe

Farben

○ naturfarben

● schwarz

mm	mm	Längen mm	Toleranzen außen mm		Toleranzen innen mm		PA 6 G
			min.	max.	min.	max.	kg/m
675	650	1.000	2	20	-2	-20	67,200 ○ ●
	660						55,400 ○ ●
700	230	1.000	2	20	-2	-20	428,800 ○ ●
	240						424,800 ○ ●
	250						420,500 ○ ●
	260						416,100 ○ ●
	270						411,500 ○ ●
	280						406,700 ○ ●
	290						401,700 ○ ●
	300						396,600 ○ ●
	310						391,200 ○ ●
	320						385,700 ○ ●
	330						380,000 ○ ●
	340						374,000 ○ ●
	350						368,000 ○ ●
	360						361,700 ○ ●
	370						355,200 ○ ●
	380						348,600 ○ ●
	390						341,700 ○ ●
	400						334,800 ○ ●
	410						327,600 ○ ●
	420						320,200 ○ ●
	430						312,700 ○ ●
	440						304,900 ○ ●
	450						297,000 ○ ●
	460						288,900 ○ ●
	470						280,600 ○ ●
	480						272,000 ○ ●
	490						263,400 ○ ●
	500						254,500 ○ ●
	510						245,500 ○ ●
	520						236,300 ○ ●
	530						226,900 ○ ●
	540						217,300 ○ ●
	550						207,500 ○ ●
	560						197,500 ○ ●
570	187,400 ○ ●						
580	177,000 ○ ●						
590	166,600 ○ ●						
600	155,900 ○ ●						
610	145,000 ○ ●						
620	133,900 ○ ●						
630	122,700 ○ ●						
640	111,200 ○ ●						
650	99,600 ○ ●						
660	87,800 ○ ●						
670	75,800 ○ ●						
680	63,600 ○ ●						
725	600	1.000	2	20	-2	-20	214,000 ○
775	575	1.000	2	20	-2	-20	312,300 ○



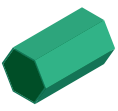
Hohlstäbe

Farben

◉ naturfarben

● schwarz


mm	mm	Längen mm	Toleranzen außen mm		Toleranzen innen mm		PA 6 G
			min.	max.	min.	max.	kg/m
825	675	1.000	2	20	-2	-20	285,900 ◉
875	750						279,700 ◉
900	625						467,500 ◉
975	875						290,800 ◉
1.075	950						377,200 ◉



Sechskantstäbe

Farben

⊙ naturfarben

	Längen	PA 6 G
	mm	kg/m
17	2.000	0,270 ⊙
19		0,350 ⊙
24		0,600 ⊙